

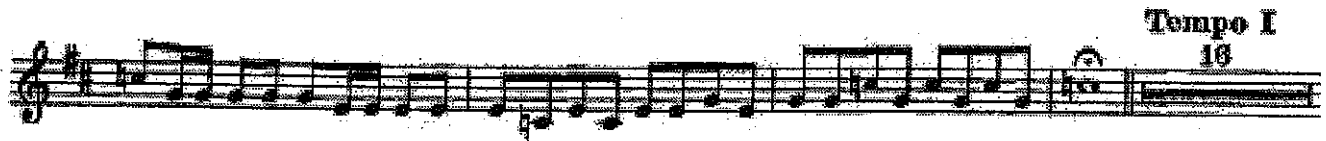
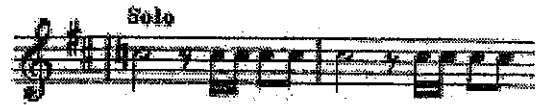
USU Fall 2017

# Trumpet Audition Excerpts

Beethoven: *Leonore Overture No. 3* (off-stage calls)

#1

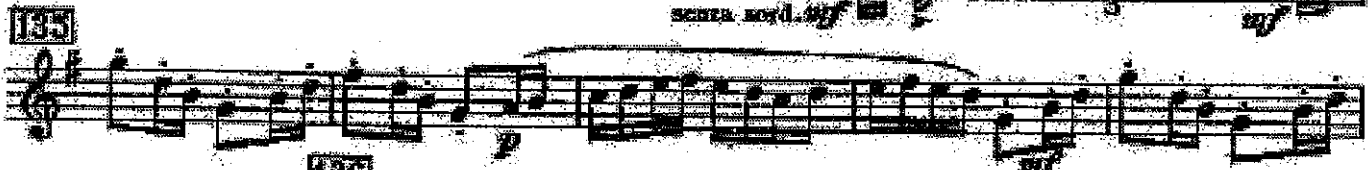
B-flat Trumpet



Stravinsky: *Pétrouchka* ("Ballerina's dance")

#2

B-flat Trumpet



#3

Respighi: Pines of Rome (second movement: off-stage solo)

C Trumpet



*il più lontano possibile Più mosso*

*f ma dolce ed espress.*

4 3

This block contains the first musical staff for the C Trumpet part. It begins with a treble clef and a key signature of one sharp (F#). The tempo and mood markings are *il più lontano possibile* and *Più mosso*. The dynamics are *f ma dolce ed espress.*. The staff contains a series of notes with a slur over them. There are handwritten numbers '4' and '3' above the staff, likely indicating fingerings or breath marks.

This block contains the second musical staff, continuing the melodic line from the first staff. It features a treble clef and a key signature of one sharp. The notes are connected by a long slur, indicating a continuous phrase.

This block contains the third musical staff, continuing the melodic line. It features a treble clef and a key signature of one sharp. The notes are connected by a long slur.

This block contains the fourth musical staff, continuing the melodic line. It features a treble clef and a key signature of one sharp. The notes are connected by a long slur.

#24

Op 2

DU STYLE (\*)

6

Allegretto (M.M. 84 = ♩)

mf

*f* *p* *f* *p* *mf* *cresc.*

*p* *poco rit.* *dolce*

*poco rit. espressivo* *string.*

*cresc.* *p*

*rit.* *mf*

*sostenuto* *p* *ad lib.* *mf* *Trillez avec 1er et 2e*

\* Voir G. BALAY: N° 4-8-13; A. CHAVANNE: N° 23; ARBAN: N° 2-8-12; A. PETIT: N° 4-8