

# MSU MUSIC

2024-2025 SEASON

MUSIC.MSU.EDU



- BAND
- CHAMBER MUSIC
- CHOIR
- EARLY MUSIC
- JAZZ
- NEW MUSIC
- OPERA
- ORCHESTRA



College of Music  
MICHIGAN STATE UNIVERSITY

# HELLO!



At the Michigan State University College of Music, we are driven by a desire for excellence which is achieved through a commitment to artistry, technique, and performance. We also highly value variety, personal creativity, diversity and inclusion, and community. They inform our choices, and nowhere are these values more evident than in our season of events.

I am pleased to bring you our 2024-2025 concert and event season! With something for everyone and at affordable pricing, our faculty artists, ensembles, students, and special guest artists offer incredible opportunities to experience beautiful and powerful music in intimate venues like no other in this area.

Music can bring joy, aid in well-being, comfort in times of need, and express moving and sometimes difficult emotions. Through our orchestras, bands, chamber music, solo performances, jazz, choirs, operas, and more, there is truly something for everyone at MSU. We invite you to find what moves you and join us!

Sincerely,

JAMES B. FORGER | DEAN, COLLEGE OF MUSIC

## 2024-2025

MSU College of Music Season

### PAGE | CONTENTS

- 4 VENUES
- 6 SHOWCASE SERIES
- 8 WEST CIRCLE SERIES
- 9 EARLY MUSIC SERIES
- 10 CELLO PLUS CHAMBER MUSIC FESTIVAL
- 11 MSU OPERA THEATRE
- 12 GIVING
- 13 JAZZ
- 16 ORCHESTRAS
- 19 BANDS
- 22 CHOIRS
- 24 MUSIQUE 21
- 25 MORE ENSEMBLES
- 26 ARTIST-FACULTY AND GUEST RECITAL SERIES
- 31 PUBLIC LECTURES, MASTERCLASSES AND MORE
- 32 CALENDAR
- 36 INFORMATION AND MAP
- 37 TICKETS
- 38 ABOUT US

# INVEST IN MUSIC STUDENT SUCCESS

The College of Music envisions a future as a national beacon of excellence where the power of music thrives and enriches countless lives. We embody the core Spartan values of hard work, dedication, and community focus, and we are committed to advance our world-class musical community with the unwavering support of our Spartan network.

In today's highly competitive landscape, scholarships are the driving force behind attracting and retaining the most gifted and passionate music students at MSU. The Knas Family Endowed Scholarship in Music Education, generously established by Kenneth and Marla Knas, is an example of the transformative impact a family can have on the lives of aspiring music educators. This scholarship, in honor of Ken's parents, dedicated elementary music teachers Gregory and Thelma Knas, supports students pursuing a music education degree who exhibit a steadfast commitment, strong motivation, proactive initiative, and a drive to seek opportunities for personal and professional growth.

Donors like the Knas family are vital partners in our mission to achieve unprecedented levels of musical excellence at MSU, and your generous support can do the same. It can be a direct, life-changing moment for young musicians, scholars, and educators, and it can empower the College of Music to cultivate the next generation of music leaders.

We invite you to contact the College of Music Advancement Office to explore how you can contribute to the enhancement of our vibrant community of performing artists, scholars, and educators. Together, as the Knas family has done, we can benefit generations of music professionals to come who will shape the future of music and create a lasting legacy.

If you would like more information about how you can support the College of Music, please call (517) 353-9872 or send an email to [music.giving@msu.edu](mailto:music.giving@msu.edu).



**“Receiving a scholarship helped me focus on my academics without all the financial worries. Being able to put that aside and look ahead to my career was really huge for me.”**

— Landon Black



MusicMSU



MusicMSU



Michiganstatemusic



(517) 353-5340



# VENUES

## REINVENTED SPACES

Opening to the public in 2021, the MSU College of Music's Billman Music Pavilion and Music Building renovations elevated the concertgoer's experience through brilliantly appointed, acoustically advanced spaces with **Murray Hall** and **Hollander Hall**.

In addition, a beautiful new state-of-the-art pipe organ is a focal point of the recently renovated MSU Alumni Memorial Chapel. Adorning the interior and enveloping small audiences in choral and sacred repertoire, the **Red Cedar Organ** was privately funded and custom-made for the space.



Murray Hall, Billman Music Pavilion, Music Building



Hollander Hall



Red Cedar Organ at Alumni Memorial Chapel



Fairchild Theatre, MSU Auditorium



Cook Recital Hall, Music Building



Cobb Great Hall, Wharton Center

**MURRAY HALL**  
BILLMAN MUSIC PAVILION  
MUSIC BUILDING  
Capacity: 156 (130 main floor, 26 balcony)  
333 West Circle Drive

**HOLLANDER HALL**  
MUSIC BUILDING  
Capacity: 91  
333 West Circle Drive

**RED CEDAR ORGAN**  
ALUMNI MEMORIAL CHAPEL  
Capacity: 145  
636 Auditorium Road

See page 36 for a map of venue locations.

## TREASURED VENUES

Guided by the same architects and acousticians who designed the new Billman Music Pavilion, the MSU College of Music has focused on ensuring its beloved performance venues benefit from state-of-the-art renovations adored by artists and patrons alike. **Fairchild Theatre** and **Cook Recital Hall** have been completely upgraded, and inspired performances in the **Cobb Great Hall of the Wharton Center** complete the circle of diverse venues on campus. Through enhanced acoustics, design, and proximity to the stage, there are no bad seats in the house.

**FAIRCHILD THEATRE**  
MSU AUDITORIUM  
Capacity: 400  
542 Auditorium Road

**COOK RECITAL HALL**  
MUSIC BUILDING  
Capacity: 180  
333 West Circle Drive

**COBB GREAT HALL**  
WHARTON CENTER  
Capacity: 2,420  
750 East Shaw Lane  
at Bogue Street

**PASANT THEATRE**  
WHARTON CENTER  
Capacity: 585  
750 East Shaw Lane  
at Bogue Street

See page 36 for a map of venue locations.



# MSU Federal Credit Union showcase series

Explore musical excellence with this unique blend of performances. Celebrate the holidays with classical grandeur in the Cobb Great Hall of Wharton Center, and the next week toe-tapping jazz in the intimate setting of Fairchild Theatre. Other concerts delight in the elegance and expressive dynamics of a string quartet, the excitement of a chamber music showdown, and the majestic sounds of four grand pianos igniting the stage simultaneously. Grouped together in a special series made possible by the MSU Federal Credit Union, this annual showcase offers unforgettable experiences.



## MSU Symphony Orchestra and Choirs, “Holiday Glory”

12/7 Saturday, 8:00 p.m.

COBB GREAT HALL, WHARTON CENTER \$\$\$  
More than 250 voices join the MSU Symphony Orchestra to celebrate the joy and spirit of the season in an uplifting, powerful concert. The evening features *Gloria* by Francis Poulenc, a vibrant choral work with ceremonial joy, rich orchestration, and lyrically expressive melodies. Also included are selections from *Messiah* by George Frideric Handel, a monumental oratorio renowned for its powerful choruses and intricate arias. Conducted by Sandra Snow and Jonathan Reed. *Generously sponsored by Ann, John and Abby Lindley, and a donor family with the hope this concert touches our spirit and brings peace and joy to all this season and in the coming year.*

Reserved seating: \$22 for adults, \$20 for seniors, \$12 for students. **Tickets are only available through Wharton Center, (517) 432-2000, (800) WHARTON, or whartoncenter.com. Ticketing fees from Wharton Center: Facility fee of \$3.50, plus internet fee of \$2.50 per ticket if purchased online, transactions over the phone add a flat fee of \$10.00 (on total purchase).**

## A Jazzy Little Christmas

12/14 Saturday, 8:00 p.m.

FAIRCHILD THEATRE, MSU AUDITORIUM \$\$\$  
Secure your tickets early for one of the season's most beloved concerts, featuring the MSU Professors of Jazz. This talented ensemble, led by Rodney Whitaker, selects their favorite holiday tunes and infuses them with joyful and imaginative interpretations that captivate audiences year after year. This year, the concert is extra special with the addition of jazz vocalist Carmen Bradford, the newest member of the group, whose exceptional voice brings an enchanting new dimension to performances. Joined by special guests, this all-star cast of master improvisers brings festive cheer and thrilling performances to fill the hall with holiday spirit. *Generously sponsored by Joseph and Jeanne Maguire.*

Reserved seating: \$22 for adults, \$20 for seniors, \$12 for students and those under age 18. **Add a \$1.50 convenience fee for tickets ordered online or over the phone.**



## Woodward String Quartet

3/13 Thursday, 7:30 p.m.

FAIRCHILD THEATRE, MSU AUDITORIUM \$\$\$  
The Woodward String Quartet, comprised of principal musicians from the Detroit Symphony Orchestra, takes the Fairchild Theatre stage for an enchanting evening of chamber music. The program features Joseph Haydn's luminous *“Sunrise” String Quartet No. 4*, the evocative *String Quartet No. 1* by MSU composer Zhou Tian, and concludes with the quartet joining forces with student chamber musicians from the College of Music for Felix Mendelssohn's exhilarating *Octet for Strings*. The visionary quartet includes nationally and internationally award-winning soloists Robyn Bollinger, violin; Kimberly Kaloyanides-Kennedy, violin; Wei Yu, cello; and violist Eric Nowlin, MSU College of Music assistant professor of viola. Classical music aficionados and newcomers alike will be captivated by this powerful program, showcasing vibrant and masterful musicians from the DSO and MSU. *Generously sponsored by Dr. Robert W. Uphaus and Dr. Lois M. Rosen.*

Reserved seating: \$17 for adults, \$15 for seniors, \$7 for students and those under age 18. **Add a \$1.50 convenience fee for tickets ordered online or over the phone.**



*The entire Showcase Series is generously sponsored by the MSU Federal Credit Union.*



## Barbara Wagner Chamber Music Competition Showcase

4/6 Sunday, 1:00 p.m.

COOK RECITAL HALL, MUSIC BUILDING \$  
The fifth annual Barbara Wagner Chamber Music Competition culminates in a dynamic showcase of final performances, featuring the thrilling announcement of winners who receive cash prizes and professional opportunities. Selected by a distinguished panel of external jurors, MSU College of Music student musicians diligently prepare for this competition, a pivotal step in elevating their music careers. This fun-filled event combines the beauty of outstanding performances with the excitement of competition, including the coveted People's Choice Award voted on by the audience.

*This chamber music competition program and concert is generously sponsored by Barbara E. Wagner.*

General Admission: \$12 for adults, \$10 for seniors, free for students and those under age 18. **Add a \$1.50 convenience fee for tickets ordered online or over the phone.**

## Piano Monster

5/4 Sunday, 3:00 p.m.

FAIRCHILD THEATRE, MSU AUDITORIUM \$\$\$  
“May the Fourth Be With You” as you embark on a classical music journey through space with epic works from films like *Star Wars, 2001: A Space Odyssey*, and more. From intricate melodic resonance to powerful roars, this unique concert explores the endless possibilities of four grand pianos together on stage. Guided by multiple pianists, the performance showcases various multi-artist combinations, including piano four-hands. Join us at the Fairchild Theatre for this family-friendly event that promises an unforgettable musical experience. Let the majestic sound of grand pianos transport you to the stars and beyond. *Generously sponsored by Alena Fabian, M.D., and Andrea L. Wulf.*

Reserved seating: \$22 for adults, \$20 for seniors, \$12 for students and those under age 18. **Add a \$1.50 convenience fee for tickets ordered online or over the phone.**





# Joanne and Bill Church west.circle series

Join us for a captivating series of concerts that explore diverse musical landscapes. Experience the intricate beauty of Baroque music, the profound elegance of French chamber works, and the timeless genius of Mozart. Conclude your musical journey with “Whirlwinds,” celebrating the charm and versatility of wind instruments. Each concert offers a unique and enriching experience for fans and newcomers alike to the West Circle Series.

## Baroque Fest

10/23 Wednesday, 7:30 p.m.

FAIRCHILD THEATRE, MSU AUDITORIUM \$\$ Experience the rich tapestry of Baroque music, featuring both original instrumentation and transcriptions. This concert highlights works for piano, harpsichord, and violin, showcasing MSU’s newly appointed pianist, Stanislav Khristenko, alongside harpsichordist Nicola Canzano and violinist Yvonne Lam.

*Generously sponsored by Trustee Emerita Dee Cook in memory of her husband Byron Cook.*

## Vive la France

12/2 Monday, 7:30 p.m.

FAIRCHILD THEATRE, MSU AUDITORIUM \$\$ Embark on a musical journey to France and immerse yourself in the profound beauty of the world’s finest composers. This concert, showcasing Gabriel Fauré’s renowned *Piano Quartet in C Minor* and other works, offers a delightful selection of exquisite chamber music.

*Generously sponsored by Dr. Roy and Christine Meland.*

*The entire West Circle Series is generously sponsored by Joanne and Bill Church.*

## Happy Birthday, Mozart!

1/27 Monday, 7:30 p.m.

FAIRCHILD THEATRE, MSU AUDITORIUM \$\$ An annual tradition, join us to celebrate Mozart’s 269<sup>th</sup> birthday with a concert showcasing his timeless compositions, followed by cookies for a delightful conclusion to an extraordinary evening of music.

*Generously sponsored by the Stanley and Selma Hollander Endowment for Chamber Music.*

## Whirlwinds

4/7 Monday, 7:30 p.m.

FAIRCHILD THEATRE, MSU AUDITORIUM \$\$ Discover the rich heritage of wind instruments with a thoughtfully curated selection of music, showcasing the remarkable versatility and charm of works composed for bassoon, clarinet, flute, oboe, saxophone, and more.

*Generously sponsored by April Clodes and Glen Brough.*

\$\$= Reserved seating: \$17 for adults, \$15 for seniors, \$7 for students and those under age 18. Add a \$1.50 convenience fee for tickets ordered online or over the phone.

# Taylor Johnston early.music series

This unique music series delves into works from the Renaissance and Baroque eras, featuring internationally renowned guest ensembles. The series showcases three distinctly themed concerts, highlighting influential compositions and the composers who shaped the music of their time.



## “Sounds of Sancho’s London,” Les Délices

9/17 Tuesday, 7:30 p.m.

FAIRCHILD THEATRE, MSU AUDITORIUM \$\$ A man of letters, merchant, abolitionist, theater lover, and musician, Charles Ignatius Sancho (1729-1780) made history as the first British man of African descent to vote in a general election. The acclaimed Cleveland-based Les Délices’ ensemble of baroque oboe, violin, cello, and harpsichord explores music composed by Sancho himself as well as that of his contemporaries, including works by Geminiani and selections from Handel’s *Music for the Royal Fireworks*.

Based in Cleveland, Ohio, the group is known for its innovative programming and world-class performances on period instruments. Founded by baroque oboist Debra Nagy in 2009, Les Délices has established a reputation for delivering audiences informative and adventurous early music era concerts.

## “All excellent and esteemed,” Piffaro, The Renaissance Band

1/21 Tuesday, 7:30 p.m.

FAIRCHILD THEATRE, MSU AUDITORIUM \$\$ The wind players of Piffaro, the world renowned “pied-pipers of Early Music,” look at one of the most potent examples of musical migration in 16th-century Europe: the story of the Bassano family. An Italian-Jewish family of wind players who moved from Italy to England during the reign of Henry VIII, they pushed instrumental music into a new frontier. Piffaro delights audiences with beautiful and elegant recreations of wind band works of the late Medieval and Renaissance periods. Its ever-expanding instrumentation includes shawms, dulcians, sackbuts, recorders, krummhorns, bagpipes, lutes, guitars, and a variety of percussion—all carefully remodeled instruments to reflect their period.



## “The Ghosts of Hamlet,” Le Concert de l’Hostel Dieu with Roberta Mameli, soprano

3/11 Tuesday, 7:30 p.m.

FAIRCHILD THEATRE, MSU AUDITORIUM \$\$ The legend of Prince Hamlet is the basis for Shakespeare’s tragedy, but in the 18th century, the same tale inspired numerous Italian operas. Le Concert de l’Hostel Dieu, known for riveting performances of French Baroque music, presents a semi-staged evening of arias based on long-lost scores by Alessandro Scarlatti and his contemporaries. Soprano Roberta Mameli, accompanied by a small string ensemble with harpsichord, portrays the romantic Veremonda (Shakespeare’s Ophelia) and Gerilda (Gertrude), Hamlet’s mother, who is torn between love for her son and passion for her cold and unfaithful husband. Le Concert de l’Hostel Dieu was created in 1992 and performed its first concert on the grounds of the centuries-old medical institution, the Grand Hôtel-Dieu in Lyon, France. The ensemble’s concerts and recordings are well known across France and abroad for transposing the diversity of Baroque music into the modern era.

*The entire Early Music Series is generously supported by the Taylor Johnston Early Music Series Endowment established by Taylor Johnston.*

\$\$= Reserved seating: \$17 for adults, \$15 for seniors, \$7 for students and those under age 18. Add a \$1.50 convenience fee for tickets ordered online or over the phone.





Ken and Sandy Beall  
**cello plus**  
 chamber music festival

For more than two decades, this annual tradition has delighted attendees with its diverse offerings. This year's lineup includes an inspiring guest chamber orchestra from South Korea, a concert celebrating Romantic-era music, and a captivating piano quartet blending Spartan Green with Stanford Cardinal. This dynamic chamber music series offers listeners a unique opportunity to experience a rich variety of repertoire in just one week.



**Hearts of Vision Chamber Orchestra**

10/6 Sunday, 7:00 p.m.  
 FAIRCHILD THEATRE, MSU AUDITORIUM \$\$  
 Hailing from South Korea, the Hearts of Vision Chamber Orchestra is renowned for their technical prowess, emotional depth, and sheer passion for performance. Comprised of visually impaired musicians, this remarkable ensemble delivers heartfelt performances that celebrate the human spirit, providing an emotional and uplifting concert experience. Led by music director Sung Jae Lee, the orchestra presents a unique variety of classical masterpieces and contemporary works, joined by riveting piano solos from guest pianist Margarita Shevchenko.

**Echoes of Romance:  
 A Voice and Instrumental Journey**

10/8 Tuesday, 7:30 p.m.  
 FAIRCHILD THEATRE, MSU AUDITORIUM \$\$  
 Experience an enchanting evening of Romantic era repertoire featuring tenor Nils Neubert and pianist Yuri Kim, joined by a select group of chamber musicians. Neubert's soaring voice and Kim's piano mastery will bring beloved songs and arias to life, while celebrated instrumental pieces create rich, textured soundscapes. This program is designed to encapsulate the emotion and artistry of the Romantic period, celebrating its timeless beauty with invigorating performances.



**MSU-Stanford Piano Quartet**

10/10 Thursday, 7:30 p.m.  
 COOK RECITAL HALL, MUSIC BUILDING \$\$  
 Celebrate the vibrant spirit of collaboration between Spartan and Cardinal musicians as they unite for a unique concert experience. Journey through the timeless masterpieces of Beethoven and Fauré, where the dynamic interplay of violin, viola, cello, and piano takes center stage. The program presents Beethoven's commanding depth and Fauré's enchanting lyricism, highlighting these composers' contrasting yet harmonious styles. MSU artists include Yvonne Lam on viola and Suren Bagratuni on cello, alongside Stanford artists Owen Dalby on violin and Stephen Prutsman on piano. (This event is reserved seating.)



*The entire Cello Plus Chamber Music Festival is generously sponsored by Ken and Sandy Beall.*

\$\$= Reserved seating: \$17 for adults, \$15 for seniors, \$7 for students and those under age 18. Add a \$1.50 convenience fee for tickets ordered online or over the phone.

Worthington Family Foundation  
**opera theatre**  
 season

Supported by the expressive sounds of the MSU Symphony Orchestra, the MSU Opera Theatre season showcases the enchanting melodies of Mozart's *The Magic Flute* and the delightful charm of Rossini's *La Cenerentola*. Mid-season, enjoy a special concert featuring a variety of arias and duets from beloved operas, highlighting the richness of the vocal arts at MSU.



**FALL: Mozart's *The Magic Flute***

11/13 Wednesday, 7:00 p.m.  
 11/15 Friday, 7:00 p.m.  
 11/16 Saturday, 7:00 p.m.  
 11/17 Sunday, 3:00 p.m.  
 FAIRCHILD THEATRE, MSU AUDITORIUM \$\$\$  
 CONDUCTOR: Octavio Mäs-Arocas  
 STAGE DIRECTOR: Melanie Helton  
 SET DESIGNER: Thalia Lara  
 LIGHT DESIGNER: Brent Wrobel

Immerse yourself in the timeless enchantment of Mozart's *The Magic Flute*, a beloved opera that weaves a tale of courage, wisdom, and the triumph of light over darkness. As heroes Prince Tamino, the Queen's daughter Pamina, and the comedic Papageno embark on a magical journey filled with trials and wonders, they discover profound truths about love, enlightenment, and the human spirit. Featuring the Queen of the Night's iconic aria, *Der Hölle Rache*, this dramatic production blends captivating music with transformative storytelling. Sung in English with English surtitles. *Generously sponsored by James and Susan Bonfiglio and the Eleanor H. and Harold E. Leichenko Opera Endowment established by Lauren Julius Harris.*

**A Celebration of the Beautiful Voice**

1/25 Saturday, 3:00 p.m.  
 FAIRCHILD THEATRE, MSU AUDITORIUM \$\$\$  
 In this annual gala event, graduate students from the MSU Vocal Arts Program pour their hearts into arias and scenes from a variety of classic and modern operas. *Generously sponsored by Richard Witter and Michael and Elaine Serling.*

**SPRING: Rossini's *La Cenerentola***

3/26 Wednesday, 7:00 p.m.  
 3/28 Friday, 7:00 p.m.  
 3/29 Saturday, 7:00 p.m.  
 3/30 Sunday, 3:00 p.m.  
 FAIRCHILD THEATRE, MSU AUDITORIUM \$\$\$  
 CONDUCTOR: Katherine Kilburn  
 STAGE DIRECTOR: Melanie Helton  
 SET DESIGNER: Thalia Lara  
 LIGHT DESIGNER: Brent Wrobel  
 HAIR AND MAKEUP DESIGN: Martha Ruskai

Prepare to be charmed by the delightful twist on the classic Cinderella tale in Rossini's *La Cenerentola*. Meet the kind-hearted Angelina, affectionately known as Cenerentola, as she navigates unexpected turns with grace and resilience. In this fresh take on the classic story, the Italian nobleman Prince Ramiro searches for true love, guided not by a fairy godmother but by the wise Alidoro. This opera presents a heartwarming journey filled with themes of forgiveness, transformation, and the power of hope. Showcasing Rossini's signature bel canto style, the famous aria *Non più mesta* offers a joyous and virtuosic finale to this captivating story of enchantment. Sung in Italian with English surtitles. *Generously sponsored by the Eleanor H. and Harold E. Leichenko Opera Endowment established by Lauren Julius Harris.*

*The entire MSU Opera Theatre Season is generously supported by the Worthington Family Foundation.*

\$\$\$= Reserved seating: \$22 for adults, \$20 for seniors, \$7 for students and those under age 18. Add a \$1.50 convenience fee for tickets ordered online or over the phone.





# GIVING TO THE COLLEGE OF MUSIC

**PRIVATE GIFTS** play a vital role in our ability to maintain and enhance the quality of the programs we offer. Donations support student scholarships, fellowships, student travel and performance opportunities, instrument acquisitions, guest artists, outreach activities, operations, and other crucial areas that make the College of Music an exemplary place of learning.

## THANK YOU TO OUR 2024-2025 SPONSORS

- **Anonymous Donor Family** (Holiday Glory)
- **Sam and Mary Austin** (Musique 21 concerts)
- **Sam and Mary Austin Fund for New Music** (Tambuco Ensemble of Mexico, Nov. 21)
- **Ken and Sandy Beall** (Cello Plus Chamber Music Festival Series; Jazz Spectacular)
- **James and Susan Bonfiglio** (Symphony Orchestra, Mar. 21; Fall Opera)
- **Jenny Chung and Family for Human Rights Fund** (Jazz Nonets concerts)
- **Joanne and Bill Church** (West Circle Series)
- **April Clobes and Glen Brough** (Celebrating the Spectrum; Whirlwinds)
- **Trustee Emerita Dee Cook in memory of her husband Byron Cook** (Baroque Fest)
- **Dean Transportation** (Celebrating the Spectrum)
- **Alena Fabian, M.D.** (Votapek, Sept. 25; Piano Monster)
- **John and Gretchen Forsyth** (Oboe, Trumpet and Organ, Feb. 11; Sinder, Feb. 16)
- **Thea Glicksman** (From Vienna with Love, Jan. 17)
- **Howard and Pam Gourwitz** (Lulloff, Nov. 25)
- **Lauren Harris** (Celebrating the Spectrum)
- **Anne Hiller** (Celebrating the Spectrum)
- **Stanley and Selma Hollander Endowment for Chamber Music** (Happy Birthday, Mozart!)
- **Taylor Johnston Early Music Series Endowment established by Taylor Johnston** (Taylor Johnston Early Music Series)
- **Hari Kern and the late Ralph R. Edminster, M.D.** (Votapek, Mar. 27)
- **Eleanor H. and Harold E. Leichenko Opera Endowment established by Lauren Julius Harris** (Fall and Spring Opera)
- **Ann, John and Abby Lindley** (Holiday Glory; Wind Symphony, Nov. 24)
- **Merritt Lutz** (Jazz Spectacular; Celebrating the Spectrum; Wind Symphony, Apr. 24)
- **Clare Mackey** (Pass a Good Time, Oct. 6; Oboe, Trumpet and Organ, Feb. 11)
- **Joseph and Jeanne Maguire** (A Jazzy Little Christmas)
- **Patrick and Victoria McPharlin Guest Artist Endowment for Jazz Studies in the College of Music** (Jazz: Spirituals, Prayer and Protest Concert)
- **Pat & Mary McPharlin** (Tambuco Ensemble, of Mexico, Nov. 21)
- **Dr. Roy and Christine Meland** (Vive la France)
- **Gordon E. Miracle** (Votapek, Sept. 25; Helton, Oct. 31)
- **MSU Federal Credit Union** (Showcase Series; Spartan Spectacular; Celebrating the Spectrum)
- **MSU Federal Credit Union Entrepreneurial Musical Artist in Residence Endowed Fund** (Tambuco Ensemble of Mexico, Nov. 21)
- **George Orban and Rae Ramsdell** (Red Cedar Organ, Sept. 15)
- **Milton Powell, in memory of Sue Powell, accomplished pianist and organist** (Red Cedar Organ, Sept. 15)
- **Michael and Elaine Serling** (A Celebration of a Beautiful Voice)
- **Leonard and Sharon Tabaka** (Jazz Spectacular Finale Concert)
- **TechSmith** (Celebrating the Spectrum)
- **Dr. Robert W. Uphaus and Dr. Lois M. Rosen** (Symphony Orchestra, Sept. 27; Woodward String Quartet, Mar. 13; Bagratuni, Mar. 31)
- **Linn Van Dyne and Mike Knox** (Symphony Orchestra, Feb. 7)
- **Barbara E. Wagner** (Wagner Chamber Music Competition)
- **Dr. Charles and Philippa Webb** (Beacon Hill Music Series)
- **Richard Witter** (A Celebration of the Beautiful Voice)
- **WKAR** (Artist-Faculty and Guest Recital Series)
- **Worthington Family Foundation** (Opera Theatre Season)
- **Andrea L. Wulf** (Piano Monster)

## SPONSORSHIPS AND RECOGNITION

Sponsorships are available at \$1,000, \$2,500, and \$5,000. Sponsors will receive recognition in the form of event publicity, promotions, programs, and through online recognition. For information about event sponsorships and giving to the college, please call (517) 353-9872 or e-mail [music.giving@msu.edu](mailto:music.giving@msu.edu).



For over twenty years, Jazz Studies at MSU has been a premier destination for studying the art of jazz. With faculty who are seasoned performers, composers, teachers, and recording artists, the program honors revered jazz traditions while fostering the professional growth of its students. Consistently finishing in the top three of a major collegiate jazz competition for three consecutive years, the program's excellence is further proven by its successful graduates. Faculty frequently perform together and leverage their networks to bring top artists from around the world to mentor students, resulting in a robust schedule of public concerts for all to enjoy.

### 9/13 Friday Swing Dance

8:00 p.m. Large Rehearsal Hall, Music Bldg. \$  
The audience is encouraged to get up and dance as three jazz orchestras deliver swing and the repertoire of the great jazz masters in this high-energy concert.

#### For information on purchasing tickets, see page 37.

\$= General Admission: \$12 for adults, \$10 for seniors, free for students and those under age 18.  
\$\$= Reserved seating: \$17 for adults, \$15 for seniors, \$7 for students and those under age 18.  
Add a \$1.50 convenience fee for tickets ordered online or over the phone.

### 10/13 Sunday Jazz Orchestras with Ryan Keberle, jazz trombone

**MSUFCU JAZZ ARTIST IN RESIDENCE**  
3:00 p.m. Fairchild Theatre, MSU Aud. \$\$



Ryan Keberle is a renowned jazz trombonist known for his exceptional technique, creative improvisation, and emotive playing. Blending traditional jazz with contemporary influences, he captivates audiences and pushes musical boundaries, earning acclaim in the jazz community and beyond.

## MSU FEDERAL CREDIT UNION JAZZ ARTIST IN RESIDENCE

Three renowned jazz artists will visit campus for special performances with MSU Jazz Studies students. These public concerts cap a week of mentoring, touring, and performing through the MSUFCU Jazz Artist in Residence Program. MSU Jazz Professors Rodney Whitaker, Walter Blanding, Carmen Bradford, Xavier Davis, Michael Dease, Randy Gelispie, Randy Napoleon, and Anthony Stanco, together with Kevin Jones, leverage their extensive connections to bring these stellar artists for unique community performances.

### Blue Mondays at the MSU Federal Credit Union

**10/7** jazz trombonist Ryan Keberle    **12/2** jazz bassist John Clayton

Free, seating is limited, RSVP required. Doors open at 5:00 p.m., performances begin at 6:00 p.m. 3777 West Rd, East Lansing. Visit [msufcu.org](http://msufcu.org) for more information. See dates in this brochure for concerts with these artists and MSU jazz students.





Dan Wilson

### 11/8 Friday

#### Jazz Nonets with Dan Wilson, jazz guitar

8:00 p.m. Murray Hall, Music Building \$

Dan Wilson is a distinguished jazz guitarist, celebrated for his soulful tone, intricate improvisation, and masterful blending of jazz and blues with gospel influences, and captivates audiences with his engaging and expressive performances.

*Generously sponsored by the Jenny Chung and Family for Human Rights Fund.*

### 12/8 Sunday

#### Jazz Orchestras with John Clayton, jazz bass MSUFCU JAZZ ARTIST IN RESIDENCE

3:00 p.m. Fairchild Theatre, MSU Aud. \$\$

Bassist, composer, arranger, and producer John Clayton is a Grammy winner with nine additional nominations. He has written and/or recorded with a number of big name artists and still performs with the unique and impactful Clayton-Hamilton Jazz Orchestra.



John Clayton

### 2/14 Friday

#### Jazz Nonets with Rick Roe, jazz piano MSUFCU JAZZ ARTIST IN RESIDENCE

8:00 p.m. Murray Hall, Music Building \$\$



Rick Roe

Rick Roe, a distinguished jazz pianist, blends intricate harmonies and lyrical improvisation, crafting compelling musical narratives. His repertoire spans from classic standards to original compositions. Winner of the Great American Jazz Piano Competition in 1994 and twice a semifinalist in the Thelonious Monk International Jazz Piano Competition (1993, 1999), Roe's artistry captivates audiences with its depth and soulful expression.

*Generously sponsored by the Jenny Chung and Family for Human Rights Fund.*

### 3/23 Sunday

#### Jazz Orchestras

3:00 p.m. Pasant Theatre, Wharton Center \$

The dynamic multi-instrumental jazz orchestras of MSU take the stage in the unique setting of Wharton Center's Pasant Theatre to perform a variety of jazz standards.

#### For information on purchasing tickets, see page 37.

\$= General Admission: \$12 for adults, \$10 for seniors, free for students and those under age 18.

\$\$= Reserved seating: \$17 for adults, \$15 for seniors, \$7 for students and those under age 18.

*Add a \$1.50 convenience fee for tickets ordered online or over the phone.*

### 4/10 Thursday

#### Jazz Nonets

7:30 p.m. Fairchild Theatre, MSU Aud. \$

Four jazz nonets blend the sounds of big band with small-group performance to kick off the Jazz Spectacular series.

*Generously sponsored by the Jenny Chung and Family for Human Rights Fund.*

### 4/11 Friday

#### Swing Dance

8:00 p.m. Large Rehearsal Hall, Music Building \$

The audience will find it hard not to get up and dance as three jazz orchestras perform the repertoire of the great jazz masters as well as swing in this high-energy concert.

### 4/12 Saturday

#### Jazz at Lincoln Center: Essentially Ellington High School Jazz Band Regional Competition

8:00 a.m. – 6:00 p.m.

Fairchild Theatre, MSU Auditorium, free High school jazz bands compete and perform the music of Duke Ellington and other big band composers before a panel of Jazz at Lincoln Center clinicians and other jazz professionals, all aiming to earn the right to perform that night in the finale concert and move on to the next phase of the competition in New York.

### 4/12 Saturday

#### Jazz Spectacular Finale Concert

8:00 p.m. Fairchild Theatre, MSU Aud. \$\$\$

This finale is truly spectacular! After three days of great jazz, this performance brings it all together, highlighting MSU's Professors of Jazz, Jazz Orchestra I, and the Outstanding High School Band of the Day. Featuring special guest, award-winning baritone saxophonist Lauren Sevian, known for her dynamic versatility and expressive performance style.

*Generously sponsored Leonard and Sharon Tabaka, Merritt Lutz and Ken and Sandy Beall.*

*Reserved seating: \$25 for adults; \$20 for seniors; \$15 for students; tickets available from College of Music box office, (517) 353-5340, online at music.msu.edu, or at the door. Add a \$1.50 convenience fee for all tickets ordered online or over the phone.*



Lauren Sevian

#### For information on purchasing tickets, see page 37.

\$= General Admission: \$12 for adults, \$10 for seniors, free for students and those under age 18.

\$\$= Reserved seating: \$17 for adults, \$15 for seniors, \$7 for students and those under age 18.

*Add a \$1.50 convenience fee for tickets ordered online or over the phone.*

### 1/19 Sunday

#### Jazz: Spirituals, Prayer and Protest Concert

3:00 p.m. Fairchild Theatre, MSU Auditorium, free (ticket required)

Celebrating the birth of Dr. Martin Luther King, Jr., this annual commemorative concert features MSU Jazz Orchestras and other special guests who provide a meaningful program each year.

*Generously sponsored by the Patrick and Victoria McPharlin Guest Artist Endowment for Jazz Studies in the College of Music.*

*Free tickets are available over the phone at 517-353-5340 or for pick-up from the College of Music main office (333 W. Circle Drive, East Lansing) M-F, 8 a.m.-5 p.m. (closed Dec. 24-Jan. 1.) Tickets not claimed 10 minutes prior to event will be released.*



## MSU PROFESSORS OF JAZZ



The Jazz Studies faculty at MSU are exceptional musicians performing globally, a boon for our local and regional jazz fans. They lead and conduct the MSU Jazz Orchestras and Nonets, perform with students and the MSUFCU Jazz Artists in Residence, and play in small combos at local and national jazz venues. Most importantly, they expertly teach the next generation of jazz professionals. Learn more at music.msu.edu and mark these dates on your calendar!

#### 12/14 A Jazzy Little Christmas Fairchild Theatre

MSU Federal Credit Union Showcase Series. See page 6.

#### 2/21 Jazz concert in Murray Hall part of the Artist-Faculty and Guest Recital Series sponsored by WKAR. See page 27.





# ORCHESTRAS

This season, MSU orchestras present eleven orchestral concerts and two fully-staged opera productions, primarily in the Cobb Great Hall of the Wharton Center. The MSU Symphony Orchestra offers seven major concerts, including collaborations with choral ensembles, while the MSU Concert Orchestra performs four additional concerts. Highlights include the “Fanfare” series, showcasing premieres by MSU’s emerging composers. The season features a blend of classical masterpieces and contemporary works, appealing to all audiences.

## 9/27 Friday Symphony Orchestra, “The Triumph of Freedom”

8:00 p.m. Cobb Great Hall, Wharton Center \$  
Presenting Beethoven’s ingenious and lovable *Concerto for Violin, Cello, Piano, and Orchestra in C Major* performed by MSU Artist-faculty Yvonne Lam, violin; Suren Bagratuni, cello; and Deborah Moriarty, piano. The program also includes the intensely emotional and overwhelmingly powerful *Symphony No. 5 in D Minor* by Dmitri Shostakovich, and a Fanfare selection composed by an MSU College of Music student. Octavio Más-Arocas, conductor. *Generously sponsored by Dr. Robert W. Uphaus and Dr. Lois M. Rosen.*



Lam



Moriarty



Bagratuni



## 10/24 Thursday Concert Orchestra, “Colorscales”

7:30 p.m. Cobb Great Hall, Wharton Center \$  
This program features beautiful waltzes from J. Strauss’ *Blue Danube*, the poetic masterpiece *The Happiest Color* from *The Telling Rooms* by Michael-Thomas Foumai, and the audience favorite *Les Sauvages* from *Les Indes galantes* by Jean-Philippe Rameau. The concert also includes works by the exciting American composer Jennifer Jolley in *Blue Glacier Decoy* and MSU DMA composition student Katahji Copley with *Gasoline Rainbows*. Katherine Kilburn, conductor.

### For information on purchasing tickets, see page 37.

\$ = General Admission: \$12 for adults, \$10 for seniors, free for students and those under age 18.

\$\$\$ = Reserved seating: \$22 for adults, \$20 for seniors, \$12 for students and those under age 18.

Add a \$1.50 convenience fee for tickets ordered online or over the phone.

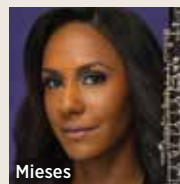
Ticketing fees from Wharton Center: Facility fee of \$3.50, plus internet fee of \$2.50 per ticket if purchased online, transactions over the phone add a flat fee of \$10.00 (on total purchase).

## 10/27 Sunday Symphony Orchestra, “A Sea of Talent”

3:00 p.m. Cobb Great Hall, Wharton Center \$  
Not one, but eight MSU Artist-faculty soloists will be featured in this concert! Richard Sherman, flute; Nermis Mieses, oboe; Guy Yehuda, clarinet; Michael Kroth, bassoon; Corbin Wagner, horn; Heather Zweifel, trumpet; Kenneth Thompkins, trombone; and Gwendolyn Dease, percussion, will highlight Frank Martin’s dazzling *Concerto for Seven Wind Instruments, Timpani, Percussion and String Orchestra*. The program also includes a beautifully colorful and exciting picture of the sea in Claude Debussy’s *La Mer*, and works by the captivating composer Viet Cuong. An additional work will include a Fanfare selection composed by an MSU College of Music student. Octavio Más-Arocas, conductor.



Sherman



Mieses



Yehuda



Kroth



Wagner



Zweifel



Thompkins



Dease

## 11/23 Saturday Symphony Orchestra, “Bohemian Soul”

8:00 p.m. Cobb Great Hall, Wharton Center \$  
This concert features one of Antonín Dvořák’s most personal and patriotic works, *Symphony No. 7 in D Minor*, a critically acclaimed work considered the greatest and purest of all symphonies. The event will also highlight the exciting gypsy sounds in Zoltán Kodály’s *Dances of Galánta*, and MSU Artist-faculty soloist Philip Sinder in a performance of *Concerto for Tuba and Orchestra* written by retired MSU Music professor Ronald Newman. An additional work will include a Fanfare selection composed by an MSU College of Music student. Katherine Kilburn, conductor.

## 12/5 Thursday Concert Orchestra, “Operatic Favorites”

7:30 p.m. Cobb Great Hall, Wharton Center \$  
This concert will feature some of the most beloved, beautiful and exciting opera overtures and suites ever written. The evening’s program includes the thrilling *The Italian Girl in Algiers Overture* by Gioachino Rossini, the beautiful and profound melodies from Georges Bizet’s *Suite from the Opera Carmen*, Tchaikovsky’s *Eugene Onegin Overture*, the Overture from *Orpheus in the Underworld* by Jacques Offenbach, and the triumphant piece from *Aida, Triumphant March* by Giuseppe Verdi. Zongheng Zhang and Daniel Jaggars, conductors.

## 12/7 Saturday MSU Symphony Orchestra and Choirs, “Holiday Glory”

8:00 p.m. Cobb Great Hall, Wharton Center \$\$\$  
MSUFCU Showcase Series  
More than 250 voices join the MSU Symphony Orchestra to celebrate the joy and spirit of the season in an uplifting, powerful concert. The evening features *Gloria* by Francis Poulenc, a vibrant choral work with ceremonial joy, rich orchestration, and lyrically expressive melodies. Also included are selections from *Messiah* by George Frideric Handel, a monumental oratorio renowned for its powerful choruses and intricate arias. Conducted by Sandra Snow and Jonathan Reed. (Tickets available only through Wharton Center.) See page 6.





## 2/7 Friday

### Symphony Orchestra, "Mahler 5"

8:00 p.m. Cobb Great Hall, Wharton Center \$  
Gustav Mahler once said, "A symphony must be like the world. It must contain everything." True to this, his *Symphony No. 5* encompasses all human emotions: doubt, fear, and grief, and concludes with a triumphant celebration of life. This music, with its emotional layers and complexities, is brutal, somber, beautiful, and joyful, addressing the fundamental uncertainties of our time. An additional work will include a Fanfare selection composed by an MSU College of Music student. Octavio Más-Arocas, conductor.

Generously sponsored by Linn Van Dyne and Mike Knox.

## 2/27 Thursday

### Concert Orchestra, "Movie Night"

7:30 p.m. Cobb Great Hall, Wharton Center \$  
This concert will feature original music from some of the most favorite films of all time. The program will include music from *Jurassic Park*, *The Sound of Music*, and *Harry Potter*. The event will also feature performances by the winner of the Concert Orchestra Concerto Competition. Katherine Kilburn, conductor.

## 3/21 Friday

### Symphony Orchestra, "Pines of Rome" and Honors Concert

8:00 p.m. Cobb Great Hall, Wharton Center \$



Italian composer and violinist Ottorino Respighi was a master of orchestral colors. He was also drawn to the sensual and decadent depictions of ancient Rome as well as ancient Italian music. He masterfully infused his compositions with the excitement, beauty, and grandeur of his beloved Rome. The concert will feature *Pines of Rome*, one of Respighi's most celebrated works, considered a triumphant masterpiece that magnificently depicts the splendor of Rome. The concert will also highlight the triumphal winners of the annual Honors Concert Competition, and a Fanfare selection composed by an MSU College of Music student. Octavio Más-Arocas, conductor.

Generously sponsored by James and Susan Bonfiglio.

## 4/22 Tuesday

### Concert Orchestra, "Russian Masters"

7:30 p.m. Cobb Great Hall, Wharton Center \$  
Nikolai Rimsky-Korsakov and Alexander Borodin were members of "The Mighty Five," a group of 19<sup>th</sup>-century Russian composers who collaborated to forge a national style, profoundly influencing the world of music. The program features Rimsky-Korsakov's *Russian Easter Festival Overture* and Borodin's *Symphony No. 2*. The concert also highlights a performance of the winning work from the annual Jere Hutcheson Composition Competition. Katherine Kilburn, conductor.

## 4/26 Saturday

### Symphony Orchestra and Choirs, "Songs of Love and Destiny"

8:00 p.m. Cobb Great Hall, Wharton Center \$  
The MSU Symphony Orchestra joins forces with the Choral Union, State Singers, and University Chorale to paint a vivid portrait of human emotions. The evening's repertoire is a rich tapestry, beginning with *Brahms' Schicksalslied*, a mesmerizing composition renowned for its ethereal beauty, celestial harmonies, and profound depth. Following this, Richard Strauss' *Der Rosenkavalier Suite* sweeps audiences away with its blend of earthly passions, sublime melodies, and graceful waltzes, evoking the opulence and allure of Vienna's golden era. Concluding the program is William Walton's *Belshazzar's Feast*, an exuberant cantata that immerses listeners into a world of eerie grandeur, sumptuous textures, and raw, emotive power. Described as a "human drama, not a religious experience," it promises to be a captivating finale to an evening of musical enchantment. An additional work will include a Fanfare selection composed by an MSU College of Music student. Artist-faculty member Mark Rucker, baritone, is a featured soloist. Sandra Snow and Octavio Más-Arocas, conductors.



Mark Rucker

\$= General Admission: \$12 for adults, \$10 for seniors, free for students and those under age 18. Add a \$1.50 convenience fee for tickets ordered online or over the phone.



# BANDS

MSU Bands present performances that encompass a broad range of works for wind ensembles including chamber music, full band repertoire, and the music of underrepresented composers. The Cobb Great Hall of Wharton Center for Performing Arts is the home for concerts combining 16 events between Wind Symphony, Symphony Band, Concert Band, Campus Band, and the Spartan Youth Wind Symphony.

## 9/24 Tuesday Symphony Band

7:30 p.m. Cobb Great Hall, Wharton Center \$  
The program includes *Fiesta del Pacifico* by Roger Nixon, *The Gum-Suckers March*, *Irish Tune from County Derry*, and *Shepherd's Hey* by Percy Grainger, *Paris Sketches* by Martin Ellerby, and *Big Four on the River* by James M. David. David Thornton, conductor.

## 10/16 Wednesday Concert Band and Campus Band

7:30 p.m. Cobb Great Hall, Wharton Center \$  
The program includes *Revelry* by William Pitts, *Heart on Fire* by Viet Cuong, *Two Songs Without Words* (arr. Frank Erickson) by Gustav Holst, and *Fairest of the Renaissance Faire* by Erika Svano. Arris Golden, Concert Band conductor.

## 9/26 Thursday Wind Symphony

7:30 p.m. Cobb Great Hall, Wharton Center \$  
Concert features guest brass quintet Boston Brass with the MSU Wind Symphony performing *Overture from Dancer in the Dark* (arr. Henry Dorn) by Björk Guðmundsdóttir, *Downey Overture* by Óscar Navarro, *L.A. tudes* by Jules Pegrarn, *Perplexing Times* by Gordon Goodwin, *Flight of the Green Hornet* (arr. Chris Castellanos) by Billy May, and *Malagueña* (arr. Chris Castellanos) by Ernesto Lecuona. Kevin L. Sedatole, conductor.



Boston Brass

## 10/25 Friday Wind Symphony and Symphony Band

8:00 p.m. Cobb Great Hall, Wharton \$  
The concert features guest composer Viet Cuong. The MSU Wind Symphony will perform *Enigma* by MSU composer David Biedenbender, *Autumn Triptych* and *Re(new)al* by Viet Cuong. The MSU Symphony Band will perform *La Procession du Rocio Op. 9* (transcr. Alfred Reed) by Joaquín Turina, *Deciduous* by Viet Cuong, and *Un Cafecito* by Dennis Llinás. Kevin L. Sedatole and David Thornton, conductors.



Viet Cuong

**For information on purchasing tickets, see page 37.**

\$= General Admission: \$12 for adults, \$10 for seniors, free for students and those under age 18. Add a \$1.50 convenience fee for tickets ordered online or over the phone. Ticketing fees from Wharton Center: Facility fee of \$3.50, plus internet fee of \$2.50 per ticket if purchased online, transactions over the phone add a flat fee of \$10.00 (on total purchase).



### 11/3 Sunday

#### Spartan Spectacular

3:00 p.m. Cobb Great Hall, Wharton Center \$\$\$

An MSU Bands tradition since 1971, Spartan Spectacular will offer an exciting musical experience for the entire family. This unique program is a surround-sound experience featuring performances by the MSU Wind Symphony, faculty and student groups from the MSU College of Music, the Spartan Marching Band with the MSU Drumline, Twirlers, and the Color Guard. *Generously sponsored by the MSU Federal Credit Union.*

**Tickets go on sale to the public Oct. 3. Orchestra level \$15, grand tier \$12, \$10 group seating** (orchestra level or grand tier), available at Wharton Center ticket office only, (517) 432-2000, (800) WHARTON, or whartoncenter.com. Wharton Center: Facility fee of \$3.50, plus internet fee of \$2.50 per ticket if purchased online, transactions over the phone add a flat fee of \$10.00 (on total purchase).



### 11/24 Sunday

#### Wind Symphony with Spartan Youth Wind Symphony

3:00 p.m. Cobb Great Hall, Wharton Center \$

The program includes the MSU Wind Symphony performing *Toccata, Adagio*, and *Fugue, in C Major* (transcr. John P. Paynter) by J.S. Bach, *Nutcracker Suite* (arr. Jaco Nefs) by Pyotr Ilyich Tchaikovsky, and *Galop* (transc. Donald Hunsberger) by Dmitri Shostakovich. The Spartan Youth Wind Symphony will perform *Mass: V. Meditation No. 1 (Introit)* (arr. Merlin Patterson) by Leonard Bernstein, *Fantasia on Greensleeves* (arr. Merlin Patterson) by Ralph Vaughan Williams, *Diamond Tide* by Viet Cuong, and *Ancient and Honorable Artillery Company* by John Philip Sousa. Kevin L. Sedatole and Dana Sedatole, conductors. *Generously sponsored by Ann, John and Abby Lindley.*

### 11/26 Tuesday

#### Symphony Band

7:30 p.m. Cobb Great Hall, Wharton Center \$

The program includes *George Washington Bridge* by William Schuman, *Elegy* by John Barnes Chance, *The Gallant Seventh* by John Philip Sousa, and *Ecstatic Waters* by Steven Bryant. David Thornton, conductor.

### 12/4 Wednesday

#### Concert Band and Campus Band

7:30 p.m. Cobb Great Hall, Wharton Center \$

The program includes *Feather* by Danielle Fisher, *Fantasy on American Sailing Songs* by Clare Grundman, *Temperance* by Aaron Perrine, *Symphonic Suite* by Clifton Williams, and *Bullets and Bayonets* by John Philip Sousa. Arris Golden, Concert Band conductor.

### 2/4 Tuesday

#### Wind Symphony

7:30 p.m. Cobb Great Hall, Wharton Center \$

The concert features MSU Artist-faculty members Kenneth Thompkins, trombone, and Derrick Fox, baritone. The MSU Wind Symphony will perform *Celebration* by Gao Hong, *Symphony in B-flat* by Paul Hindemith, *Concerto for Trombone and Wind Ensemble* by David Maslanka, and *Old American Songs* by Aaron Copland. Kevin L. Sedatole, conductor.



Kenneth Thompkins



Derrick Fox

### 2/6 Thursday

#### Symphony Band

7:30 p.m. Cobb Great Hall, Wharton Center \$

The program features *Out of the Shadows* composed by MSU alumnus Henry Dorn, *Nocturne* (arr. David Thornton and Zhou Tian), *Seeker's Scherzo* by Zhou Tian, and *La Fiesta Mexicana* by H. Owen Reed. David Thornton, conductor.



### 2/19 Wednesday

#### Concert Band and Campus Band

7:30 p.m. Cobb Great Hall, Wharton Center \$

The program includes *Vanity Fair (A Comedy Overture)* (transcr. Brent Karrick) by Perry Fletcher, *House Plants in Terracotta Pots (Music for Everyday Life)* by Roy Magnuson, *Illyrian Dances* by Guy Woolfenden, *Forward/Still* by Omar Thomas, and *Fiesta No. 4* by Sonia Morales-Matos. Arris Golden, Concert Band conductor.

### 3/18 Tuesday

#### Symphony Band

7:30 p.m. Cobb Great Hall, Wharton Center \$

The program includes *Zoom* by Scott Boerma, *Lux Aurumque* by Eric Whitacre, *Tarot* by Lindsay Bronnenkant, *Sea Songs* by Ralph Vaughan Williams, and *Jupiter, from "The Planets"* (arr. Merlin Patterson) by Gustav Holst. David Thornton, conductor.

### 3/20 Thursday

#### Wind Symphony

7:30 p.m. Cobb Great Hall, Wharton Center \$

The concert features MSU trumpeter Justin Emerich. The Wind Symphony will perform *Enigma* by David Biedenbender, *Three Gospel Settings* by Ben Horne, and solo trumpet performances by Justin Emerich on *River of Time* by David Biedenbender. Kevin L. Sedatole, conductor.



Justin Emerich

### 4/15 Tuesday

#### Concert Band and Campus Band

7:30 p.m. Cobb Great Hall, Wharton Center \$

The program includes *These Radiant Moments* by Harrison J. Collins, *Prelude in the Dorian Mode (Tiènto del Segundo Tono)* (arr. Percy Grainger) by Antonio de Cabezón, *Mock Morris* (arr. Joseph Kreines) by Percy Grainger, *Cajun Folk Songs II* by Frank Ticheli and *Pas Redoublé* (arr. Arthur Frackenpohl) by Camille Saint-Saëns. Arris Golden, Concert Band conductor.

### 4/24 Thursday

#### Wind Symphony

7:30 p.m. Cobb Great Hall, Wharton Center \$

The concert features guest composer Frank Ticheli and MSU tubist Philip Sinder. The Wind Symphony will perform *BASH*, *Lux Aeterna*, and *Blue Shades* by Frank Ticheli, *Adventures on Earth from E.T. the Extra-Terrestrial* (arr. Paul Lavender) and *Star Wars Trilogy* (arr. Donald Hunsberger) by John Williams, and *Ursa, mvt. II* by Libby Larsen featuring soloist Philip Sinder. Kevin L. Sedatole, conductor.

*Generously sponsored by Merritt Lutz.*



Frank Ticheli



Philip Sinder

### 4/27 Sunday

#### Symphony Band with Spartan Youth Wind Symphony

3:00 p.m. Cobb Great Hall, Wharton Center \$

The concert features guest composer Frank Ticheli and MSU oboist Nermis Mieses. The MSU Symphony Band will perform *Bravado* by Gala Flagello, *Serenade for Kristin* and *Symphony No. 2* by Frank Ticheli, and *The Twelve Gallon Hat* by Julie Giroux. The Spartan Youth Wind Symphony will perform *Illumination* by David Maslanka, *Melodious Thunk* by David Biedenbender, *Shenandoah* by Frank Ticheli, and *Caribana Afterparty* by Omar Thomas. David Thornton and Dana Sedatole, conductors.



Nermis Mieses

## FEATURED MSU COMPOSERS

MSU College of Music Artist-faculty from the Composition Area will highlight band performances this season.



David Biedenbender  
10/25, 3/20, 4/27



Zhou Tian  
2/6

**For information on purchasing tickets, see page 37.**

\$= General Admission: \$12 for adults, \$10 for seniors, free for students and those under age 18. *Add a \$1.50 convenience fee for tickets ordered online or over the phone.*

*Ticketing fees from Wharton Center: Facility fee of \$3.50, plus internet fee of \$2.50 per ticket if purchased online, transactions over the phone add a flat fee of \$10.00 (on total purchase).*





# CHOIRS

MSU's eight choral ensembles include singers from throughout the campus community performing a wide array of music. Considered the top auditioned choral ensemble, **University Chorale** performs accompanied and unaccompanied music from historical and contemporary musical practices. The undergraduate music major ensemble, **State Singers**, performs gems from the Renaissance Era to sacred and secular music to folk and world music. **Mosaic's** choral repertoire for soprano and alto voices focuses on contemporary treble choral literature. **Chamber Choir** features musical works suited for smaller ensembles. Featuring singers from all walks of campus life are the non-auditioned ensembles. They include **Campus Choir** which explores music that echoes issues of our time; **Singing Spartans** performs everything from folk songs to spirituals and historical selections from the tenor/bass repertory; and **Viridis** performs varied programs of historical and contemporary music for soprano/alto voices with a focus on compositions by women and underrepresented composers. The largest of all choirs is **Choral Union**, which performs major choral-orchestral works and includes members from the greater Lansing community and campus faculty and staff.

## 10/26 Saturday State Singers and University Chorale

8:00 p.m. Fairchild Theatre, MSU Auditorium \$  
The State Singers will perform pieces centered around the theme "Music in the Key of Life," showcasing selections that highlight various aspects of the human condition. The University Chorale's program, titled "Chaotic Joy," explores the concept of energetic and boisterous outbursts through singing that uplift the human spirit. Their repertoire spans from J.S. Bach to contemporary composers such as David Shapiro and Tracey Wong. Derrick Fox and Sandra Snow, conductors.

## 11/24 Sunday Viridis and Campus Choir

7:00 p.m. Fairchild Theatre, MSU Auditorium \$  
Experience a rich tapestry of choral music performed by Viridis, MSU's treble glee club, and Campus Choir. Under the direction of Stuart Hill, a new member of the Music Education faculty, the program delves into the theme of "new beginnings," presenting music that embraces change and newness with courage and grace. Marianna Romero Serra and Stuart Hill, conductors.

## 12/3 Tuesday Mosaic and Singing Spartans

7:30 p.m. Fairchild Theatre, MSU Auditorium \$  
The soprano and alto voices of Mosaic, alongside the tenor and bass harmonies of Singing Spartans, perform a variety of choral gems, featuring both historical and contemporary music from around the world. Sandra Snow and Jonathan Reed, conductors.



**For information on purchasing tickets, see page 37.**

\$= General Admission: \$12 for adults, \$10 for seniors, free for students and those under age 18. Add a \$1.50 convenience fee for tickets ordered online or over the phone.

Ticketing fees from Wharton Center: Facility fee of \$3.50, plus internet fee of \$2.50 per ticket if purchased online, transactions over the phone add a flat fee of \$10.00 (on total purchase).

## 12/7 Saturday MSU Symphony Orchestra and Choirs, "Holiday Glory"

8.00 p.m. Cobb Great Hall, Wharton Center \$\$\$  
More than 250 voices join the MSU Symphony Orchestra to celebrate the joy and spirit of the season in an uplifting, powerful concert. The evening features *Gloria* by Francis Poulenc, a vibrant choral work with ceremonial joy, rich orchestration, and lyrically expressive melodies. Also included are selections from *Messiah* by George Frideric Handel, a monumental oratorio renowned for its powerful choruses and intricate arias. Conducted by Sandra Snow and Jonathan Reed. (Tickets available only through Wharton Center.) See page 6.



## 4/1 Tuesday Viridis and Campus Choir

7:30 p.m. Fairchild Theatre, MSU Auditorium \$  
This concert celebrates the rich voices of MSU with a program that delves into themes of playfulness, childhood, and mischief. Mariana Romero Serra and Stuart Hill, conductors.

## 4/8 Tuesday Mosaic and Singing Spartans

7:30 p.m. Fairchild Theatre, MSU Auditorium \$  
The soprano and alto voices of Mosaic, alongside the tenor and bass harmonies of Singing Spartans, perform a variety of choral gems, featuring both historical and contemporary music from around the world. Sandra Snow and Jonathan Reed, conductors.

**For information on purchasing tickets, see page 37.**

\$= General Admission: \$12 for adults, \$10 for seniors, free for students and those under age 18.

\$\$\$= Reserved seating: \$22 for adults, \$20 for seniors, \$12 for students and those under age 18.

Add a \$1.50 convenience fee for tickets ordered online or over the phone.

Ticketing fees from Wharton Center: Facility fee of \$3.50, plus internet fee of \$2.50 per ticket if purchased online, transactions over the phone add a flat fee of \$10.00 (on total purchase).

## 4/16 Wednesday State Singers and University Chorale

7:30 p.m. Fairchild Theatre, MSU Auditorium \$  
Titled "Ring Out, Wild Bells," this concert is inspired by Alfred Tennyson's poem, featuring music that calls for wringing out inequities and injustices of the old and ringing in a new era of fairness, acceptance, and tolerance. The program includes historic and contemporary works by composers such as Felix Mendelssohn, Jonathan Dove, and Lee Kesselman, among others. Sandra Snow and Jonathan Reed, conductors.

## 4/26 Saturday Symphony Orchestra and Choirs, "Songs of Love and Destiny"

8.00 p.m. Cobb Great Hall, Wharton Center \$  
The MSU Symphony Orchestra joins forces with the Choral Union, State Singers, and University Chorale to paint a vivid portrait of human emotions. The evening's repertoire is a rich tapestry, beginning with Brahms' *Schicksalslied*, a mesmerizing composition renowned for its ethereal beauty, celestial harmonies, and profound depth. Following this, Richard Strauss' *Der Rosenkavalier Suite* sweeps audiences away with its blend of earthly passions, sublime melodies, and graceful waltzes, evoking the opulence and allure of Vienna's golden era. Concluding the program is William Walton's *Belshazzar's Feast*, an exuberant cantata that immerses listeners into a world of eerie grandeur, sumptuous textures, and raw, emotive power. Described as a "human drama, not a religious experience," it promises to be a captivating finale to an evening of musical enchantment. An additional work will include a Fanfare selection composed by an MSU College of Music student. Artist-faculty member Mark Rucker, baritone, is a featured soloist. Sandra Snow and Octavio Más-Arocas, conductors.







# MUSIQUE 21

Using a variety of theatrical techniques including film, lighting, and movement, Musique 21 features flexible instrumentation and focuses on new works for a truly unique experience.

## 9/23 Monday Musique 21

7:30 p.m. Fairchild Theatre, MSU Auditorium \$  
Presenting a variety of works from the 21st century featuring unique instrumental combinations. The program includes *NO one To kNOW one* by Andy Akiho, *Aqua Regia* by Mark Fromm, *Many Many Cadences* by Sky Macklay, and *Mount Rainier Search and Rescue* by Stephen Lias. Benjamin Horne, conductor.

## 10/28 Monday Musique 21, “An Ode to Nature”

7:30 p.m. Fairchild Theatre, MSU Auditorium \$  
Presenting a portrait of nature through the lens of a diverse group of contemporary composers, this concert features music by Dobrinka Tabakova, Michael-Thomas Foumai, Jennifer Jolley, and visiting composer in residence Viet Cuong. Experience a blend of ideas and sounds as vibrant as nature itself. Katherine Kilburn, conductor.



## 2/3 Monday Musique 21

7:30 p.m. Murray Hall, Music Building \$  
Experience contemporary works that examine isolation, technology, and the passing of time with a variety of musical ensembles. The program includes *Drones*, *Variations*, *Ornaments* by Nico Muhly, *Light*, *Awaken* by Jennifer Bellor, *Miss Minutes* by Gala Flagello, *Reflecting Light* by Adam Schoenberg and to *wAlk Or ruN in wEst harlem* by Andy Akiho. Michael Gabriel, conductor.

## 4/21 Monday Musique 21, “Finnish perspective”

7:30 p.m. Fairchild Theatre, MSU Auditorium \$  
Kaija Saariaho, who passed away in 2023, was one of the most influential composers of modern times. Her work, highly admired and impactful, has shaped the artistry of many respected musicians today. Among the successful contemporary composers emerging from Finland, this concert will delve into Saariaho’s music and other composers from her homeland, exploring what gives their music its uniquely Finnish character. Octavio Más-Arocas, conductor.

*All Musique 21 concerts are generously sponsored by Sam and Mary Austin.*



# MORE ENSEMBLES

## 10/30 Wednesday Percussion Ensemble

7:30 p.m. Fairchild Theatre, MSU Auditorium \$  
Presenting a range of contemporary works performed by MSU’s percussion ensemble.

## 11/1 Friday African Diaspora Percussion Ensemble

8:00 p.m. Fairchild Theatre, MSU Auditorium \$  
Members of MSU’s percussion ensemble perform a variety of traditional songs and rhythms from the African Diaspora including West Africa, Congo and various Caribbean Cultures.

## 11/9 Saturday Sensory Friendly Spartan Concert

3:00 p.m. Community Music School East Lansing, 4930 Hagadorn Road, free (see map on page 36).  
All are welcome to this event presenting a variety of chamber ensembles in a concert designed to accommodate individuals on the autism spectrum or those with sensory sensitivities. Enjoy fun, interactive music-making activities in an atmosphere that allows audience mobility and noise making. A quiet room will also be available for attendees.

## 11/20 Wednesday Tuba-Euphonium Ensemble

7:30 p.m. Fairchild Theatre, MSU Auditorium \$  
Presenting tuba-euphonium quartets, as well as the full 18-member MSU Tuba-Euphonium Ensemble, performing original and transcribed works.

## 12/7 Saturday and 12/8 Sunday Chamber Music Showcase Concert

Saturday, 3:00 p.m. and Sunday, 7:00 p.m. Cook Recital Hall, Music Building \$  
Join us for two distinct recital programs featuring dynamic instrumental performances by select student chamber ensembles from the MSU College of Music. Enjoy a diverse range of classical and contemporary repertoire, perfect for chamber music enthusiasts. *A single ticket permits patrons to attend one or both performances.*

**For information on purchasing tickets, see page 37.**

\$= General Admission: \$12 for adults, \$10 for seniors, free for students and those under age 18. Add a \$1.50 convenience fee for tickets ordered online or over the phone.

## 1/28 Tuesday Trombone Choir

7:30 p.m. Fairchild Theatre, MSU Auditorium \$  
Presenting a variety of original works and transcriptions for trombone ensembles under the direction of the MSU College of Music’s newly appointed Associate Professor of Trombone Kenneth Thompkins.

## 4/3 Thursday Percussion Ensemble

7:30 p.m. Fairchild Theatre, MSU Auditorium \$

## 4/4 Friday

### African Diaspora Percussion Ensemble

8:00 p.m. Fairchild Theatre, MSU Auditorium \$

## 4/8 Tuesday Sensory Friendly Spartan Concert

10:00 a.m. Community Music School East Lansing, 4930 Hagadorn Road, free (see map on page 36).

## 4/13 Sunday Tuba and Euphonium Alumni Concert

3:00 p.m. Fairchild Theatre, MSU Auditorium \$  
Enjoy an afternoon of tuba and euphonium music, featuring solo works, quartets, the full 18-member ensemble, and special performances by an Alumni Tuba-Euphonium Ensemble, celebrating Professor Philip Sinder’s 43 years with the MSU College of Music.

## Fall 2024 Spartan Marching Band

Watch home game activities, including fan-favorite performances and the march to the stadium. The drumline performs at the Student Book Store two hours before kickoff, and the SMB warmup starts 90 minutes before kickoff on Adams Field, next to the Music Building. Details at [spartanmarchingband.com](http://spartanmarchingband.com). David Thornton, SMB director; Arris Golden, SMB associate director.

8/30 vs. Florida Atlantic	11/2 vs. Indiana
9/14 vs. Prairie View A&M	11/22 vs. Purdue
9/28 vs. Ohio State	11/30 vs. Rutgers
10/19 vs. Iowa (Homecoming)	





the College of Music  
**artist-faculty  
 & guest** recital series  
 sponsored by WKAR

WKAR

sponsored by WKAR



**INSTRUMENTAL  
 CHAMBER  
 MUSIC RECITALS**

**9/19 Thursday**

**Corbin Wagner, horn**

7:30 p.m. Fairchild Theatre, MSU Auditorium \$  
 Presenting a variety of works by Reinicke, Basler, and Herzogenberg. Featuring Corbin Wagner, horn; Nermis Mieses, oboe; Michael Kroth, bassoon; Tasha Warren, clarinet; Patrick Johnson, piano.

**11/4 Monday**

**Zhihua Tang and Friends**

7:30 p.m. Cook Recital Hall, Music Building \$  
 MSU pianist Zhihua Tang invites you to a recital in collaboration with MSU clarinetist Mingzhe Wang along with guest musicians from the Detroit Symphony Orchestra; Assistant Concertmaster and violinist Hai Xin Wu and cellist David LeDoux. The first half of the concert will feature groundbreaking works by Ludwig van Beethoven and Joan Tower with the second half presenting the *Veronese Trio* (Tang, Wu, and LeDoux) performing Mendelssohn's beloved *Piano Trio No. 1 in D Minor, Op. 49*.

**11/25 Monday**

**Joseph Lulloff, saxophone**

7:30 p.m. Cook Recital Hall, Music Building \$  
 This recital will feature MSU saxophonist Joseph Lulloff, along with guest artists Yu-Lien The, Western Michigan University professor of piano, and Jordan Lulloff, an MSU alumnus and saxophonist from Chicago. The program will showcase various works, including two newly commissioned saxophone duos by John Fitz Rogers and Alyssa Weinberg, and works by Amanda Harberg and others.

*Generously sponsored by Howard and Pam Gourwitz*

\$= General Admission: \$12 for adults, \$10 for seniors, free for students and those under age 18. Add a \$1.50 convenience fee for tickets ordered online or over the phone.

**1/17 Friday**

**"From Vienna with Love"**

8:00 p.m. Cook Recital Hall, Music Building \$  
 "From Vienna with Love" explores the romantic sonorities of clarinet, cello, and piano trio repertoire with Vienna as the meeting point among the composers on this program. The recital features Beethoven's *Trio Op. 11*, Alexander von Zemlinsky's *Trio Op. 3*, Robert Kahn's *Serenade Op. 73*, and Brahms' *Trio Op. 114*. ARTISTS: Guy Yehuda, clarinet; Suren Bagratuni, cello; Ralph Votapek, piano.  
*Generously sponsored by Thea Glicksman.*

**2/2 Sunday**

**Lunar New Year Celebration Concert**

3:00 p.m. Cook Recital Hall, Music Building \$

Join us for an evening of music and cultural celebration. Now in its fourth year, this annual concert celebrates the Lunar New Year with a program directed by MSU violin faculty member Yvonne Lam. The event features MSU artists and guest performers showcasing works by composers of Asian descent.

ARTISTS: Yvonne Lam, violin; Zhihua Tang, piano; and Mingzhe Wang, clarinet. (This event is reserved seating.)



**2/11 Tuesday**

**Flourishing Pipes: Oboe, Trumpet and Organ**

7:30 p.m. MSU Alumni Memorial Chapel \$  
 Experience an extraordinary chamber music recital, where the Red Cedar Organ intertwines with oboe and trumpet in a mesmerizing fusion of sounds. Set amidst the beauty of the MSU Alumni Memorial Chapel, this event will feature a variety of innovative and inspiring compositions. ARTISTS: Nermis Mieses, oboe; Justin Emerich, trumpet; and Hae Won Jang, organ.

*Generously sponsored by John and Gretchen Forsyth, and Clare Mackey.*

**2/16 Sunday**

**Philip Sinder, tuba**

3:00 p.m. Cook Recital Hall, Music Building \$  
 Join us for a special recital highlighting artist-faculty member Philip Sinder, tuba, celebrating his 43rd and final year at MSU. The program will feature a variety of solo and chamber repertoire performed by Sinder and friends.

*Generously sponsored by John and Gretchen Forsyth.*



**JAZZ RECITALS**

**9/11 Wednesday**

**Jazz Works by Whitaker and Ruggiero**

7:30 p.m. Cook Recital Hall, Music Building \$  
 Featuring a blend of jazz works by MSU bassist and composer Rodney Whitaker and retired composition and music theory professor Charles Ruggiero, performed by members of the MSU Professors of Jazz joined by saxophonist Joseph Lulloff.

**2/20 Thursday**

**At the Border for Jazz Duo**

7:30 p.m. Cook Recital Hall, Music Building \$  
 Renowned guests classical saxophonist Nicolas Prost and jazz pianist Sébastien Paindestre present "At the Border of Jazz," a blend of classical precision with jazz spontaneity. Featuring works by Wayne Shorter, Paquito D'Rivera, Branford Marsalis, Michel Portal, Aïrelle Besson, Bojan Z, and Nguyễn Lê, the program showcases pieces written exclusively for the duo. Touring globally, the two musicians captivate audiences with innovative interpretations echoing Gershwin and Bernstein's genre-blurring genius.



**2/21 Friday**

**MSU Professors of Jazz**

8:00 p.m. Murray Hall, Music Building \$  
 From jazz standards to innovative arrangements and original compositions, this instrumental band, steeped in jazz tradition yet always willing to venture out, never disappoints with its exciting and often moving live performances. ARTISTS: Walter Blanding, saxophone; Carmen Bradford, voice; Xavier Davis, piano; Michael Dease, trombone; Randy Gelispie, drums; Randy Napoleon, guitar; Anthony Stanco, trumpet; Rodney Whitaker, bass; and guests.



**SOLO AND PIANO  
 ACCOMPANIED  
 RECITALS**

**9/6 Friday**

**Tasha Warren, clarinet**

8:00 p.m. Cook Recital Hall, Music Building \$  
 Presenting an evening of classical works by Patrick Harlin, Astor Piazzola, Derek Bermel, Ahmed Karam, and more. ARTISTS: Tasha Warren, clarinet; Patrick Johnson, piano.

**10/14 Monday**

**Mingzhe Wang, clarinet**

7:30 p.m. Cook Recital Hall, Music Building \$  
 Presenting an evening of works for clarinet by French composers. The program includes music by Louise Farrenc, Ernest Chausson, Francis Poulenc, and James Helgeson. ARTISTS: Mingzhe Wang, clarinet; Zhihua Tang, piano.

**2/18 Tuesday**

**Dmitri Berlinsky, violin**

7:30 p.m. Cook Recital Hall, Music Building \$  
 Presenting a violin recital featuring MSU's Dmitri Berlinsky accompanied by alumna Jiarui Cheng on piano. Their performance shines with Schubert's emotive *Fantasy for Violin and Piano* alongside a diverse selection of classical pieces.

**3/17 Monday**

**Suren Bagratuni, cello**

7:30 p.m. Cook Recital Hall, Music Building \$  
 MSU cellist Suren Bagratuni accompanied by doctoral student and pianist Soojin Kim present a recital of iconic works for cello and piano by Felix Mendelssohn, Edvard Grieg, and Sulkhan Tsintsadze.

**3/31 Monday**

**Bach Cello Suites**

7:00 p.m. Alumni Memorial Chapel \$  
 Solo performances from cellist Suren Bagratuni bring to life J.S. Bach's Six Suites for cello solo. These highly regarded compositions are considered the most celebrated and immortalized instrumental works and Bach's greatest musical achievement. With each suite containing six movements, they are a musical marathon that takes the audience on a dance-like journey of classical Baroque.

*Generously sponsored by Dr. Robert W. Uphaus and Dr. Lois M. Rosen.*

\$= General Admission: \$12 for adults, \$10 for seniors, free for students and those under age 18. Add a \$1.50 convenience fee for tickets ordered online or over the phone.





## ORGAN RECITALS

### 9/15 Sunday

#### Ken Cowan, guest organist

3:00 p.m. MSU Alumni Memorial Chapel \$

As one of North America's most acclaimed concert organists, Ken Cowan brings his virtuosity and captivating artistry with a repertoire that features classical works arranged for organ by Felix Mendelssohn and J.S. Bach, alongside contemporary compositions by Gaston Litaize, Rachel Laurin, Iain Farrington, and more. Experience the grandeur and power of the Red Cedar Organ at the MSU Alumni Memorial Chapel as Cowan brings to life a diverse program that promises to thrill and inspire.



*Generously sponsored by George Orban and Rae Ramsdell, and Milton Powell, in memory of Sue Powell, accomplished pianist and organist.*

### 3/16 Sunday

#### Echoes of Majesty: Organ Transcriptions

3:00 p.m. MSU Alumni Memorial Chapel \$

Presenting "Echoes of Majesty," an organ recital featuring a variety of uniquely transcribed classical works by Richard Wagner, Gustav Holst, and Sergei Rachmaninoff performed by MSU organist Hae Won Jang.



## VOCAL ARTS RECITALS

### 9/22 Sunday

#### Harlan Jennings, Anne Nispel, and Elden Little

3:00 p.m. Fairchild Theatre, MSU Auditorium \$

Presenting an afternoon of art songs composed by Schubert, Hundley, Fauré, Debussy, Szulc, Walters, Rorem and Poulenc, featuring World War II letters from Anzio, Italy. ARTISTS: Harlan Jennings, baritone; Anne Nispel, soprano; and Elden Little, piano.

### 10/6 Sunday

#### Pass A Good Time 2024: 75th Birthday Bash!

3:00 p.m. Cook Recital Hall, Music Building \$

An annual event directed by bass-baritone Marc Embree, this recital features musical favorites and stories sung by the usual suspects and surprise guests! ARTISTS: Marc Embree, bass-baritone; Jane Bunnell, mezzo-soprano; Alban "Kit" Bridges, piano; Don Seitz, piano; and special guests "The Piano Monsters!" Young Hyun Cho, Tamar Mikeladze, Deborah Moriarty and Zhihua Tang. *Generously sponsored by Clare Mackey.*

### 10/24 Thursday

#### "Happy Two Gather"

7:30 p.m. Fairchild Theatre, MSU Auditorium \$

Presenting "Happy Two Gather," a musical evening of duets, arias, spirituals, and art songs that were created in the spirit of collaboration and friendship. ARTISTS: Richard Fracker, tenor; Mark Rucker, baritone; and piano accompanists Sadie Rucker and Elden Little.

### 10/31 Thursday

#### "Tell Me the Truth About Love"

7:30 p.m. Cook Recital Hall, Music Building \$

Soprano Melanie Helton, accompanied by guest pianist Rachelle Jonck, presents "Tell Me the Truth About Love," a potpourri of art songs and selections from the Great American Songbook, showcasing themes of love and life's journey through music.

*Generously sponsored by Gordon E. Miracle.*

### 1/23 Thursday

#### Jane Bunnell, mezzo-soprano and Marc Embree, bass-baritone

7:30 p.m. Cook Recital Hall, Music Building \$

Join us for Liederabend, an "evening of song" showcasing a variety of quintessential German art songs. ARTISTS: Jane Bunnell, mezzo-soprano; Marc Embree, bass-baritone; and Elden Little, piano.



## PIANO RECITALS

### 9/25 Wednesday

Votapek and Friends, Fourth Edition

7:30 p.m. Cook Recital Hall, Music Building \$

An evening of music for two pianos with works by Schumann, Scriabin, Stravinsky and Ravel. ARTISTS: Wei-Qing Tang, Daniel Bazin and Ralph Votapek.

*Generously sponsored by Alena Fabian, M.D. and Gordon E. Miracle.*

### 9/29 Sunday

#### Young Hyun Cho Performs Beethoven, Part 4

3:00 p.m. Cook Recital Hall, Music Building \$

Pianist Young Hyun Cho presents Beethoven's Piano Sonatas No. 12 through 15.

### 2/5 Wednesday

#### Antonio Di Cristofano, guest pianist

7:30 p.m. Cook Recital Hall, Music Building \$

Internationally acclaimed Italian pianist Antonio Di Cristofano regularly performs in major concert halls across the globe. He is also a frequent judge at international piano competitions and has given masterclasses in dozens of cities, from Greece to China and beyond. When not traveling, he resides in his native Tuscan city of Grosseto, where he serves as the director of the Scriabin International Piano Competition.



### 2/12 Wednesday

#### Stanislav Khristenko, piano

7:30 p.m. Cook Recital Hall, Music Building \$

Featuring pianist Stanislav Khristenko, newly appointed assistant professor of piano, this recital presents an evening of preludes from a variety of composers including J.S. Bach, Frédéric Chopin, Claude Debussy, George Gershwin, Nikolai Kapustin, Arnold Schoenberg, Sergei Rachmaninov, Valentin Silvestrov, and Karol Szymanowski, among others.

### 2/17 Monday

#### Romantic Masterpieces

7:30 p.m. Cook Recital Hall, Music Building \$

An evening of quintessential romantic music for piano featuring works by Schubert, Brahms, Chopin, Schumann, and Chaminade performed by MSU pianist Eric Zuber.

### 3/22 Saturday

#### Latin American Music for Two Pianos

8:00 p.m. Cook Recital Hall, Music Building \$

Join us for a vibrant journey through Latin American rhythms with this unique duo piano recital. Experience masterpieces by Carlos Guastavino, Manuel Ponce, Octávio Pinto, Astor Piazzolla, Aaron Copland and William Bolcom. A tapestry of cultural richness and musical diversity, this recital features performances by MSU pianist Derek Kealii Polischuk and pianist Sarkis Baltaian from their 2019 recorded release.

### 3/27 Thursday

#### Ralph Votapek, piano

7:30 p.m. Cook Recital Hall, Music Building \$

MSU pianist Ralph Votapek presents an evening of works by J.S. Bach, Peter Ilyich Tchaikovsky, Claude Debussy and Sergei Prokofiev.

*Generously sponsored by Hari Kern and the late Ralph R. Edminster, M.D.*

\$= General Admission: \$12 for adults, \$10 for seniors, free for students and those under age 18. Add a \$1.50 convenience fee for tickets ordered online or over the phone.

\$= General Admission: \$12 for adults, \$10 for seniors, free for students and those under age 18. Add a \$1.50 convenience fee for tickets ordered online or over the phone.



# GUEST ENSEMBLES

**10/17 Thursday**

**Trio Fibonacci**

7:30 p.m. Cook Recital Hall, Music Building \$



Internationally recognized Montreal-based Trio Fibonacci presents a program of Max Richter's *The Seasons Recomposed* and Astor Piazzolla's *The Four Seasons of Buenos Aires*. GUEST

ARTISTS: Julie-Anne Derome, violin; Gabriel Prynn, cello; Maxim Shatalkin, piano.

**11/21 Thursday**

**Tambuco Percussion Ensemble**

7:30 p.m. Fairchild Theatre, MSU Auditorium \$

Tambuco, the renowned percussion quartet from Mexico, is celebrated globally for its innovative



repertoire and electrifying performances. Utilizing everything from body percussion and unconventional objects like sticks and stones to contemporary percussion instruments, Tambuco's mastery of sound and rhythm offers a thrilling experience. With over 25 years of distinguished concerts and recordings, they have earned numerous accolades, including the Japan Foundation Award for Culture. Their tours span Latin America, Asia, Europe, the Middle East, and North America. *Tambuco is a guest artist of the MSU Federal Credit Union Entrepreneurial Musical Artist in Residence Program and is also supported by the Sam and Mary Austin Fund for New Music in the College of Music, and Pat & Mary McPharlin.*

**1/22 Wednesday**

**Duo Saxophone: Covert Ensemble**

7:30 p.m. Cook Recital Hall, Music Building \$

The Covert Ensemble, featuring guest saxophonists Dave Camwell and Kateřina Pavlíková accompanied by pianist Tingting Yao, will open the concert with three specially commissioned works created by an international consortium of nearly one hundred saxophonists. The program will conclude with Pavlíková's own arrangement of *Dance of the Comedians* by Czech composer Bedřich Smetana.



## CARILLON RECITALS



**10/31 Thursday**

**1/20 Monday**

**2/10 Monday**

**4/2 Wednesday**

Free from the Bells of Beaumont Tower

375 West Circle Dr. free, bring your own chair

Experience the enchanting melodies of MSU's 49-bell carillon at Beaumont Tower, an iconic campus landmark. Join carillonists Jon Lehrer, Laurie Harkema, and special guests for these upcoming performances:

- **Halloween:** October 31, 9:00 p.m. Enjoy spooky tunes as Beaumont Tower resonates under the night sky.
- **Martin Luther King, Jr. Day:** January 20, 12:00 p.m. Celebrate freedom and justice with melodies honoring Dr. King's legacy.
- **Lunar New Year:** February 10, 12:00 p.m. Delight in seasonal selections reflecting Asian cultures and traditions.
- **Artist-Faculty Recital:** April 2, Wed., 6:00 p.m. University Carillonist Jon Lehrer performs popular tunes and original works composed for carillon.

\$= General Admission: \$12 for adults, \$10 for seniors, free for students and those under age 18. Add a \$1.50 convenience fee for tickets ordered online or over the phone.

# INSIDE THE MUSIC

Music students engage with an array of guest lectures, workshops, masterclasses, presentations and artist residencies. The events listed here are free and open to the public. More events will be added throughout the season. Visit [music.msu.edu](http://music.msu.edu) to learn more.

## Masterclasses and Workshops

**9/16 Monday, 5:30 p.m.**

Debra Nagy with guest ensemble Les Délices, *double reed masterclass*, Cook Recital Hall, Music Building.

**9/25 Wednesday, 6:00 p.m.**

Nathan Mertens, *saxophone masterclass*, Hollander Hall, Music Building.

**10/8 Tuesday, 11:30 a.m.**

Ryan Keberle, *jazz trombone masterclass*, Murray Hall, Music Building.

**10/9 and 10/23, Wednesday, 12:00 p.m.**

Pinchas Zuckerman, viola, Murray Hall, Music Building. *Dorothy DeLay Masterclass Series.*

**10/27 Sunday, (Time TBA)**

Elias Goldstein, *viola masterclass*, Cook Recital Hall, Music Building.

**11/5 Tuesday, 11:30 a.m.**

Dan Wilson, *jazz guitar masterclass*, Murray Hall, Music Building.

**11/6 Wednesday, 12:00 p.m.**

Dmitri Berlinsky, violin, Murray Hall, Music Building. *Dorothy DeLay Masterclass Series.*

**11/16 Saturday, 10:00 a.m.**

Grigory Kalinovsky, *violin masterclass*, Murray Hall, Music Building.

**11/20 Wednesday, 6:30 p.m.**

Tambuco, guest ensemble, composition reading, Cook Recital Hall, Music Building. *MSUFCU Entrepreneurial Musical Artist in Residence.*

**12/3 Tuesday, 11:30 a.m.**

John Clayton, jazz bass, Murray Hall, Music Building. *MSUFCU Jazz Artist in Residence.*

**12/4 Wednesday, 12:00 p.m.**

Phillippe Quint, violin, Murray Hall, Music Building. *Dorothy DeLay Masterclass Series.*

**1/31 Friday, 6:00 p.m.**

Randall Goosby, violin, Cook Recital Hall, Music Building. *Dorothy DeLay Masterclass Series.*

**2/7 Friday, 12:40 p.m.**

Antonio Di Cristofano, *piano masterclass*. Cook Recital Hall, Music Building.

**2/11 Tuesday, 11:30 a.m.**

Rick Roe, jazz piano, Murray Hall, Music Building. *MSUFCU Jazz Artist in Residence.*

**2/20 Thursday, 10:30 a.m.**

Stella Chen, violin, MSU Alumni Memorial Chapel. *Dorothy DeLay Masterclass Series.*

**3/14 Friday, 5:30 p.m.**

Guest ensemble, Woodward String Quartet, *composition reading session*, Cook Recital Hall, Music Building.

**4/2 Wednesday, 12:00 p.m.**

Chee-Yun Kim, violin, Murray Hall, Music Building. *Dorothy DeLay Masterclass Series.*

## Lectures

**9/24 Tuesday, 12:20 p.m.**

Dr. Clifton Boyd, New York University, Cook Recital Hall, Music Building. *Distinguished Lecture in Music Theory Series.*

**10/15 Tuesday, 12:20 p.m.**

Dr. Trevor DeClercq, Middle Tennessee State University, Cook Recital Hall, Music Building. *Distinguished Lecture in Music Theory Series.*

**11/19 Tuesday, 12:20 p.m.**

Dr. Lindsay Reymore, Arizona State University, Cook Recital Hall, Music Building. *Distinguished Lecture in Music Theory Series.*

## Live Pitch: 2025 Running Start Competition

**2/9 Sunday, 1:00 PM**

Murray Hall, Music Building, free  
See student entrepreneurs in action as they pitch their innovative projects and music business ideas to a live audience and panel of judges. Winners can earn up to \$2,500 to fund their projects. Members of the audience are invited to vote for the People's Choice Award.





# 2024-2025

# CALENDAR

9/6 Fri	8:00 p.m.	<b>Tasha Warren, clarinet</b> (Solo/Piano Acc. Recital) <i>Artist-faculty and Guest Recital Series sponsored by WKAR</i>	Cook Recital Hall	\$	pg 27
9/11 Wed	7:30 p.m.	<b>Jazz Works by Whitaker and Ruggiero</b> (Jazz Recital) <i>Artist-faculty and Guest Recital Series sponsored by WKAR</i>	Cook Recital Hall	\$	pg 27
9/13 Fri	8:00 p.m.	<b>Jazz Swing Dance</b>	Large Rehearsal Hall	\$	pg 13
9/15 Sun	3:00 p.m.	<b>Ken Cowan, organ</b> (Guest Organ Recital) <i>Artist-faculty and Guest Recital Series sponsored by WKAR</i>	Alumni Chapel	\$	pg 28
9/17 Tue	7:30 p.m.	<b>Sounds of Sancho's London, Les Délices</b> <i>Taylor Johnston Early Music Series</i>	Fairchild Theatre	\$\$	pg 9
9/19 Thu	7:30 p.m.	<b>Corbin Wagner, horn</b> (Inst. Chamber Music Recital) <i>Artist-faculty and Guest Recital Series sponsored by WKAR</i>	Fairchild Theatre	\$	pg 26
9/22 Sun	3:00 p.m.	<b>Harlan Jennings, Anne Nispel, and Elden Little</b> (Vocal Arts Recital) <i>Artist-faculty and Guest Recital Series sponsored by WKAR</i>	Fairchild Theatre	\$	pg 28
9/23 Mon	7:30 p.m.	<b>Musique 21</b>	Fairchild Theatre	\$	pg 24
9/24 Tue	7:30 p.m.	<b>Symphony Band</b>	Wharton	\$	pg 19
9/25 Wed	7:30 p.m.	<b>Votapek and Friends, Fourth Edition</b> (Piano Recital) <i>Artist-faculty and Guest Recital Series sponsored by WKAR</i>	Cook Recital Hall	\$	pg 29
9/26 Thu	7:30 p.m.	<b>Wind Symphony</b>	Wharton	\$	pg 19
9/27 Fri	8:00 p.m.	<b>Symphony Orchestra, "The Triumph of Freedom"</b>	Wharton	\$	pg 16
9/29 Sun	3:00 p.m.	<b>Young Hyun Cho Performs Beethoven, Part 4</b> (Piano Recital) <i>Artist-faculty and Guest Recital Series sponsored by WKAR</i>	Cook Recital Hall	\$	pg 29
10/6 Sun	3:00 p.m.	<b>Pass A Good Time 2024: 75th Birthday Bash!</b> (Vocal Arts Recital) <i>Artist-faculty and Guest Recital Series sponsored by WKAR</i>	Cook Recital Hall	\$	pg 28
10/6 Sun	7:00 p.m.	<b>Hearts of Vision Chamber Orchestra</b> <i>Ken and Sandy Beall Cello Plus Chamber Music Festival</i>	Fairchild Theatre	\$\$	pg 10
10/8 Tue	7:30 p.m.	<b>Echoes of Romance: A Voice and Instrumental Journey</b> <i>Ken and Sandy Beall Cello Plus Chamber Music Festival</i>	Fairchild Theatre	\$\$	pg 10
10/10 Thu	7:30 p.m.	<b>MSU-Stanford Piano Quartet</b> <i>Ken and Sandy Beall Cello Plus Chamber Music Festival</i>	Cook Recital Hall	\$\$	pg 10
10/13 Sun	3:00 p.m.	<b>Jazz Orchestras with Ryan Keberle, jazz trombone</b> <i>MSUFCU Jazz Artist in Residence</i>	Fairchild Theatre	\$\$	pg 13
10/14 Mon	7:30 p.m.	<b>Mingzhe Wang, clarinet</b> (Solo/Piano Acc. Recital) <i>Artist-faculty and Guest Recital Series sponsored by WKAR</i>	Cook Recital Hall	\$	pg 27
10/16 Wed	7:30 p.m.	<b>Concert Band and Campus Band</b>	Wharton	\$	pg 19
10/17 Thu	7:30 p.m.	<b>Trio Fibonacci</b> (Guest Ensemble) <i>Artist-faculty and Guest Recital Series sponsored by WKAR</i>	Cook Recital Hall	\$	pg 30
10/23 Wed	7:30 p.m.	<b>Baroque Fest</b> <i>Joanne and Bill Church West Circle Series</i>	Fairchild Theatre	\$\$	pg 8
10/24 Thu	7:30 p.m.	<b>"Happy Two Gather" Richard Fracker, tenor and Mark Rucker, baritone</b> (Vocal Arts Recital) <i>Artist-faculty and Guest Recital Series sponsored by WKAR</i>	Fairchild Theatre	\$	pg 28
10/24 Thu	7:30 p.m.	<b>Concert Orchestra, "Colorscapes"</b>	Wharton	\$	pg 16
10/25 Fri	8:00 p.m.	<b>Wind Symphony and Symphony Band</b>	Wharton	\$	pg 19
10/26 Sat	8:00 p.m.	<b>State Singers and University Chorale</b>	Fairchild Theatre	\$	pg 22
10/27 Sun	3:00 p.m.	<b>Symphony Orchestra, "A Sea of Talent"</b>	Wharton	\$	pg 17
10/28 Mon	7:30 p.m.	<b>Musique 21, "An Ode to Nature"</b>	Fairchild Theatre	\$	pg 24
10/30 Wed	7:30 p.m.	<b>Percussion Ensemble</b>	Fairchild Theatre	\$	pg 25
10/31 Thu	7:30 p.m.	<b>"Tell Me the Truth About Love" Melanie Helton, soprano</b> (Vocal Arts Recital) <i>Artist-faculty and Guest Recital Series sponsored by WKAR</i>	Cook Recital Hall	\$	pg 28

10/31 Thu	9:00 p.m.	<b>Carillon Recital: Halloween, Spooky Tunes</b> <i>Artist-faculty and Guest Recital Series sponsored by WKAR</i>	Beaumont	Free	pg 30
11/1 Fri	8:00 p.m.	<b>African Diaspora Percussion Ensemble</b>	Fairchild Theatre	\$	pg 25
11/3 Sun	3:00 p.m.	<b>Spartan Spectacular</b> (Tickets only through Wharton)	Wharton	\$\$\$	pg 20
11/4 Mon	7:30 p.m.	<b>Zhihua Tang and Friends</b> (Inst. Chamber Music Recital) <i>Artist-faculty and Guest Recital Series sponsored by WKAR</i>	Cook Recital Hall	\$	pg 26
11/8 Fri	8:00 p.m.	<b>Jazz Nonets with Dan Wilson, jazz guitar</b>	Murray Hall	\$	pg 14
11/9 Sat	3:00 p.m.	<b>Sensory Friendly Spartan Concert</b>	CMS - East Lansing	Free	pg 25
11/13 Wed	7:00 p.m.	<b>Mozart's <i>The Magic Flute</i></b>	Fairchild Theatre	\$\$\$	pg 11
11/15 Fri	7:00 p.m.	<i>Worthington Family Foundation Opera Theatre Season</i>			
11/16 Sat	7:00 p.m.				
11/17 Sun	3:00 p.m.				
11/20 Wed	7:30 p.m.	<b>Tuba-Euphonium Ensemble</b>	Fairchild Theatre	\$	pg 25
11/21 Thu	7:30 p.m.	<b>Tambuco Percussion Ensemble of Mexico</b> (Guest Ensemble) <i>Artist-faculty and Guest Recital Series sponsored by WKAR</i>	Fairchild Theatre	\$	pg 30
11/23 Sat	8:00 p.m.	<b>Symphony Orchestra, "Bohemian Soul"</b>	Wharton	\$	pg 17
11/24 Sun	3:00 p.m.	<b>Wind Symphony with Spartan Youth Wind Symphony</b>	Wharton	\$	pg 20
11/24 Sun	7:00 p.m.	<b>Viridis and Campus Choir</b>	Fairchild Theatre	\$	pg 22
11/25 Mon	7:30 p.m.	<b>Joseph Lulloff, saxophone</b> (Inst. Chamber Music Recital) <i>Artist-faculty and Guest Recital Series sponsored by WKAR</i>	Cook Recital Hall	\$	pg 26
11/26 Tue	7:30 p.m.	<b>Symphony Band</b>	Wharton	\$	pg 20
12/2 Mon	7:30 p.m.	<b>Vive la France</b> <i>Joanne and Bill Church West Circle Series</i>	Fairchild Theatre	\$\$	pg 8
12/3 Tue	7:30 p.m.	<b>Mosaic and Singing Spartans</b>	Fairchild Theatre	\$	pg 22
12/4 Wed	7:30 p.m.	<b>Concert Band and Campus Band</b>	Wharton	\$	pg 20
12/5 Thu	7:30 p.m.	<b>Concert Orchestra, "Operatic Favorites"</b>	Wharton	\$	pg 17
12/7 Sat	3:00 p.m.	<b>Chamber Music Showcase</b>	Cook Recital Hall	\$	pg 25
12/7 Sat	8:00 p.m.	<b>MSU Symphony Orchestra and Choirs, "Holiday Glory"</b> <i>MSUFCU Showcase Series</i> (Tickets only through Wharton)	Wharton	\$\$\$	pg 6
12/8 Sun	3:00 p.m.	<b>Jazz Orchestras with John Clayton, jazz bass</b> <i>MSUFCU Jazz Artist in Residence</i>	Fairchild Theatre	\$\$	pg 14
12/8 Sun	7:00 p.m.	<b>Chamber Music Showcase</b>	Cook Recital Hall	\$	pg 25
12/14 Sat	8:00 p.m.	<b>A Jazzy Little Christmas</b> <i>MSUFCU Showcase Series</i>	Fairchild Theatre	\$\$\$	pg 6
1/17 Fri	8:00 p.m.	<b>"From Vienna with Love"</b> (Inst. Chamber Music Recital) <i>Artist-faculty and Guest Recital Series sponsored by WKAR</i>	Cook Recital Hall	\$	pg 26
1/19 Sun	3:00 p.m.	<b>Jazz: Spirituals, Prayer and Protest Concert</b> (Ticket required)	Fairchild Theatre	Free	pg 14
1/20 Mon	12:00 p.m.	<b>Carillon Recital: Martin Luther King, Jr. Day</b> <i>Artist-faculty and Guest Recital Series sponsored by WKAR</i>	Beaumont	Free	pg 30
1/21 Tue	7:30 p.m.	<b>"All excellent and esteemed," Piffaro, The Renaissance Band</b> <i>Taylor Johnston Early Music Series</i>	Fairchild Theatre	\$\$	pg 9
1/22 Wed	7:30 p.m.	<b>Duo Saxophone: Covert Ensemble</b> (Guest Ensemble) <i>Artist-faculty and Guest Recital Series sponsored by WKAR</i>	Cook Recital Hall	\$	pg 30
1/23 Thu	7:30 p.m.	<b>Jane Bunnell, mezzo-soprano and Marc Embree, bass-baritone</b> (Vocal Arts Recital) <i>Artist-faculty and Guest Recital Series sponsored by WKAR</i>	Cook Recital Hall	\$	pg 29
1/25 Sat	3:00 p.m.	<b>A Celebration of the Beautiful Voice</b> <i>Worthington Family Foundation Opera Theatre Season</i>	Fairchild Theatre	\$\$\$	pg 11



# 2024-2025

# CALENDAR

1/27 Mon	7:30 p.m.	<b>Happy Birthday, Mozart!</b> <i>Joanne and Bill Church West Circle Series</i>	Fairchild Theatre	\$\$	pg 8
1/28 Tue	7:30 p.m.	<b>Trombone Choir</b>	Fairchild Theatre	\$	pg 25
2/2 Sun	3:00 p.m.	<b>Lunar New Year Celebration Concert</b> (Inst. Chamber Music Recital) <i>Artist-faculty and Guest Recital Series sponsored by WKAR</i>	Cook Recital Hall	\$	pg 26
2/3 Mon	7:30 p.m.	<b>Musique 21</b>	Murray Hall	\$	pg 24
2/4 Tue	7:30 p.m.	<b>Wind Symphony</b>	Wharton	\$	pg 20
2/5 Wed	7:30 p.m.	<b>Antonio Di Cristofano, guest pianist</b> <i>Artist-faculty and Guest Recital Series sponsored by WKAR</i>	Cook Recital Hall	\$	pg 29
2/6 Thu	7:30 p.m.	<b>Symphony Band</b>	Wharton	\$	pg 20
2/7 Fri	8:00 p.m.	<b>Symphony Orchestra, "Mahler 5"</b>	Wharton	\$	pg 18
2/10 Mon	12:00 p.m.	<b>Carillon Recital: Lunar New Year</b> <i>Artist-faculty and Guest Recital Series sponsored by WKAR</i>	Beaumont	Free	pg 30
2/11 Tue	7:30 p.m.	<b>Flourishing Pipes: Oboe, Trumpet and Organ</b> (Instrumental Chamber Music Recital) <i>Artist-faculty and Guest Recital Series sponsored by WKAR</i>	Alumni Chapel	\$	pg 26
2/12 Wed	7:30 p.m.	<b>Stanislav Khristenko, piano</b> (Piano Recital) <i>Artist-faculty and Guest Recital Series sponsored by WKAR</i>	Cook Recital Hall	\$	pg 29
2/14 Fri	8:00 p.m.	<b>Jazz Nonets with Rick Roe, jazz piano</b> <i>MSUFCU Jazz Artist in Residence</i>	Murray Hall	\$\$	pg 14
2/16 Sun	3:00 p.m.	<b>Philip Sinder, tuba</b> (Inst. Chamber Music Recital) <i>Artist-faculty and Guest Recital Series sponsored by WKAR</i>	Cook Recital Hall	\$	pg 26
2/17 Mon	7:30 p.m.	<b>Eric Zuber, Romantic Masterpieces</b> (Piano Recital) <i>Artist-faculty and Guest Recital Series sponsored by WKAR</i>	Cook Recital Hall	\$	pg 29
2/18 Tue	7:30 p.m.	<b>Dmitri Berlinsky, violin</b> (Solo/Piano Acc. Recital) <i>Artist-faculty and Guest Recital Series sponsored by WKAR</i>	Cook Recital Hall	\$	pg 27
2/19 Wed	7:30 p.m.	<b>Concert Band and Campus Band</b>	Wharton	\$	pg 21
2/20 Thu	7:30 p.m.	<b>At the Border for Jazz Duo,</b> <b>Nicolas Prost and Sébastien Paindestre</b> (Guest Recital) <i>Artist-faculty and Guest Recital Series sponsored by WKAR</i>	Cook Recital Hall	\$	pg 27
2/21 Fri	8:00 p.m.	<b>MSU Professors of Jazz</b> (Jazz Recital) <i>Artist-faculty and Guest Recital Series sponsored by WKAR</i>	Murray Hall	\$	pg 27
2/27 Thu	7:30 p.m.	<b>Concert Orchestra, "Movie Night"</b>	Wharton	\$	pg 18
3/11 Tue	7:30 p.m.	<b>"The Ghosts of Hamlet,"</b> <b>Le Concert de l'Hostel Dieu with Roberta Mameli, soprano</b> <i>Taylor Johnston Early Music Series</i>	Fairchild Theatre	\$\$	pg 9
3/13 Thu	7:30 p.m.	<b>Woodward String Quartet</b> <i>MSUFCU Showcase Series</i>	Fairchild Theatre	\$\$	pg 7
3/16 Sun	3:00 p.m.	<b>Echoes of Majesty: Organ Transcriptions</b> (Organ Recital) <i>Artist-faculty and Guest Recital Series sponsored by WKAR</i>	Alumni Chapel	\$	pg 28
3/17 Mon	7:30 p.m.	<b>Suren Bagratuni, cello</b> (Solo/Piano Acc. Recital) <i>Artist-faculty and Guest Recital Series sponsored by WKAR</i>	Cook Recital Hall	\$	pg 27
3/18 Tue	7:30 p.m.	<b>Symphony Band</b>	Wharton	\$	pg 21
3/20 Thu	7:30 p.m.	<b>Wind Symphony</b>	Wharton	\$	pg 21
3/21 Fri	8:00 p.m.	<b>Symphony Orchestra, "Pines of Rome" and Honors Concert</b>	Wharton	\$	pg 18
3/22 Sat	8:00 p.m.	<b>Latin American Music for Two Pianos</b> (Piano Recital) <i>Artist-faculty and Guest Recital Series sponsored by WKAR</i>	Cook Recital Hall	\$	pg 29
3/23 Sun	3:00 p.m.	<b>Jazz Orchestras</b>	Pasant Theatre	\$	pg 14

3/26 Wed	7:00 p.m.	<b>Rossini's <i>La Cenerentola</i></b>	Fairchild Theatre	\$\$\$	pg 11
3/28 Fri	7:00 p.m.	<b>Worthington Family Foundation Opera Theatre Season</b>			
3/29 Sat	7:00 p.m.				
3/30 Sun	3:00 p.m.				
3/27 Thu	7:30 p.m.	<b>Ralph Votapek, piano</b> (Piano Recital) <i>Artist-faculty and Guest Recital Series sponsored by WKAR</i>	Cook Recital Hall	\$	pg 29
3/31 Mon	7:00 p.m.	<b>Bach Cello Suites</b> (Solo Recital) <i>Artist-faculty and Guest Recital Series sponsored by WKAR</i>	Alumni Chapel	\$	pg 27
4/1 Tue	7:30 p.m.	<b>Viridis and Campus Choir</b>	Fairchild Theatre	\$	pg 23
4/2 Wed	6:00 p.m.	<b>Carillon Recital: Jon Lehrer</b> <i>Artist-faculty and Guest Recital Series sponsored by WKAR</i>	Beaumont	Free	pg 30
4/3 Thu	7:30 p.m.	<b>Percussion Ensemble</b>	Fairchild Theatre	\$	pg 25
4/4 Fri	8:00 p.m.	<b>African Diaspora Percussion Ensemble</b>	Fairchild Theatre	\$	pg 25
4/6 Sun	1:00 p.m.	<b>Barbara Wagner Chamber Music Competition Showcase</b> <i>MSUFCU Showcase Series</i>	Cook Recital Hall	\$	pg 7
4/7 Mon	7:30 p.m.	<b>Whirlwinds</b> <i>Joanne and Bill Church West Circle Series</i>	Fairchild Theatre	\$\$	pg 8
4/8 Tue	10:00 a.m.	<b>Sensory Friendly Spartan Concert</b>	CMS - East Lansing	Free	pg 25
4/8 Tue	7:30 p.m.	<b>Mosaic and Singing Spartans</b>	Fairchild Theatre	\$	pg 23
4/10 Thu	7:30 p.m.	<b>Jazz Nonets</b>	Fairchild Theatre	\$	pg 15
4/11 Fri	8:00 p.m.	<b>Swing Dance</b>	Large Rehearsal	\$	pg 15
4/12 Sat	8:00 a.m. - 6:00 p.m.	<b>Jazz at Lincoln Center: Essentially Ellington</b> <b>High School Jazz Band Regional Competition</b>	Fairchild Theatre	Free	pg 15
4/12 Sat	8:00 p.m.	<b>Jazz Spectacular Finale Concert</b>	Fairchild Theatre	\$\$\$	pg 15
4/13 Sun	3:00 p.m.	<b>Tuba and Euphonium Alumni Concert</b>	Fairchild Theatre	\$	pg 25
4/15 Tue	7:30 p.m.	<b>Concert Band and Campus Band</b>	Wharton	\$	pg 21
4/16 Wed	7:30 p.m.	<b>State Singers and University Chorale</b>	Fairchild Theatre	\$	pg 23
4/21 Mon	7:30 p.m.	<b>Musique 21, "Finnish perspective"</b>	Fairchild Theatre	\$	pg 24
4/22 Tue	7:30 p.m.	<b>Concert Orchestra, "Russian Masters"</b>	Wharton	\$	pg 18
4/24 Thu	7:30 p.m.	<b>Wind Symphony</b>	Wharton	\$	pg 21
4/26 Sat	8:00 p.m.	<b>Symphony Orchestra and Choirs, "Songs of Love and Destiny"</b>	Wharton	\$	pg 23
4/27 Sun	3:00 p.m.	<b>Symphony Band with Spartan Youth Wind Symphony</b>	Wharton	\$	pg 21
5/4 Sun	3:00 p.m.	<b>Piano Monster</b> <i>MSUFCU Showcase Series</i>	Fairchild Theatre	\$\$\$	pg 7

Visit [music.msu.edu/events](https://music.msu.edu/events) to browse upcoming events and purchase tickets online.



## SUMMER 2025

Summer Evenings  
**Music and the Garden Series**  
Dates and times to be announced, free  
Outdoor concerts and garden tours at the W.J. Beal Botanical Garden.

6/20 Friday - 6/21 Saturday  
**27th Annual East Lansing Summer Solstice Jazz Festival**  
Times to be announced, downtown East Lansing, free  
A celebration of jazz featuring nationally recognized and regional jazz artists in a lively outdoor setting.

July Dates to be Announced  
**Celebrating the Spectrum: A Festival of Music and Life**  
Times to be announced, Music Building, free  
Pianists on the autism spectrum and student-mentors perform at welcome and finale concerts.

July 2- August 6 (Wednesdays)  
**28th Annual Muelder Summer Carillon Series**  
6:00 p.m. Beaumont Tower, West Circle Dr.  
Outdoor carillon concerts, free.



# INFORMATION

# TICKETS



- 1 Cook Recital Hall, Murray Hall, Large Rehearsal Hall, Hollander Hall, MSU Music Building/Billman Music Pavilion
- 2 Cobb Great Hall, Pasant Theatre, Wharton Center
- 3 Fairchild Theatre (MSU Auditorium)
- 4 Alumni Memorial Chapel
- 5 Demonstration Hall
- 6 Community Music School



## OUR CAMPUS PERFORMANCE SPACES

- Cook Recital Hall (Music Building, 333 West Circle Drive)
- Fairchild Theatre (MSU Auditorium Building, 542 Auditorium Road)
- Hollander Hall (Music Building, 333 West Circle Drive)
- Large Rehearsal Hall (Music Building, Billman Music Pavilion, 333 West Circle Drive)
- Murray Hall (Music Building, Billman Music Pavilion, 333 West Circle Drive)
- Alumni Memorial Chapel (636 Auditorium Road)

## WHARTON CENTER FOR PERFORMING ARTS

- Cobb Great Hall and Pasant Theatre (750 East Shaw Lane)

## OTHER VENUES

- Demonstration Hall (229 Demonstration Hall Road)
- MSU Community Music Schools (East Lansing: 4930 Hagadorn Road) (Detroit: 3408 Woodward Avenue)

## ACCESSIBILITY

College of Music programs and events are accessible and accommodating to everyone. Contact the College of Music at **(517) 353-5340** for events held at the Music Building, Fairchild Theatre, Alumni Chapel, Demonstration Hall, and the Community Music School and **(517) 432-2000** for events held at Wharton Center.

## PARKING (SEE SYMBOL FOR PARKING IN MAP ABOVE P)

### FAIRCHILD THEATRE AND ALUMNI MEMORIAL CHAPEL

Across from the MSU Auditorium Building at the corner of Farm Lane and Auditorium Road, park in metered spaces or the gated lot on Auditorium Road. Parking is free after 6 p.m.

### MUSIC BUILDING AND DEMONSTRATION HALL

Park on West Circle Drive, at MSU's Grand River Avenue Parking Ramp #6 (449 East Circle Drive, next to Olin Health Center), or at MSU Stadium Lot #62W on Red Cedar Road.

### WHARTON CENTER

Park in the Wharton Center Parking Ramp on East Shaw Lane (north entrance). Parking in this ramp (Ramp 3) is available through the Shaw entrance and the fee is the regular hourly rate for the majority of College of Music events.

## Purchase Tickets ONLINE, [music.msu.edu/events](https://music.msu.edu/events)

*(Tickets can also be purchased in person, over the phone, or at the door.)*

## TICKETS AVAILABLE BEGINNING AUGUST 21

- College of Music ONLINE BOX OFFICE at [music.msu.edu/events](https://music.msu.edu/events)
- IN PERSON or OVER THE PHONE, Room 102, Music Building, 333 West Circle Drive, M-F, 8:00 a.m.-5:00 p.m., (517) 353-5340
- AT THE DOOR beginning 45 minutes prior to events
- ALL TICKET SALES ARE NON-REFUNDABLE

## TICKET PRICES

### GENERAL ADMISSION

- \$ \$12 Adults, \$10 Seniors (age 60 and older); Students with ID and anyone under age 18 are free but require a ticket for admission.

### SPECIAL ADMISSION (RESERVED SEATING)

- \$\$ \$17 Adults, \$15 Seniors (age 60 and older), \$7 Students with ID and anyone under age 18. *Please note: Most events scheduled in Murray Hall, Cook Recital Hall, and Memorial Alumni Chapel are general admission seating.*

- \$\$\$ \$22 Adults, \$20 Seniors (age 60 and older), \$12 Students with ID and anyone under age 18.

## TICKET PROCESSING AND MAILING FEES

A convenience fee of \$1.50 per ticket will be applied to transactions made online or over the phone for events hosted by the College of Music. Tickets mailed to you will incur a \$1.00 mailing fee to cover postage and handling.

## WHARTON TICKET PROCESSING FEES

Tickets purchased directly from Wharton Center have a separate fee structure. All tickets have a facility fee of \$3.50 added for each seat. In addition, if the ticket is purchased online, an internet fee of \$2.50 is added for each seat. If tickets are purchased over the phone, a flat fee of \$10.00 is added for any total number of events or seats sold.

## TICKETING SYSTEM AND PATRON PROFILES

The ticketing system for the College of Music simplifies online purchasing. The shopping cart enables multi-ticket purchasing and options to specify paper tickets by mail or picked up at Will Call, paperless-smartphone tickets, or print-at-home tickets. Patrons can also manage their profile and establish notifications about preferred events. Customer information processed and stored through this system is secure and only used for the promotion of events presented by the College of Music.

## POTENTIAL DISCOUNTS AND PROMOTIONS

As a patron and subscriber to events presented by the College of Music, you are eligible for potential discount opportunities offered online throughout the season. Watch your email inbox for announcements about promotional offerings and upcoming events.

## CHILDREN ATTENDING EVENTS

General admission events labeled (\$) are free for MSU students and children under the age of 18 (with student ID). All free admission events will require a ticket for entry. Children should be accompanied by an adult. **Wharton Center Children Policy:** Infants and newborns are not permitted at Wharton Center and Concert Auditorium events. Everyone attending must have a ticket and be able to sit in a seat. Children under 5 years of age are not permitted unless otherwise advertised. Parents will be asked to remove their child/children if they are causing disruptions or are unable to sit quietly.

## CONCERT ETIQUETTE

Please be mindful of those seated around you. Silence your cell phone and refrain from using it or taking photos or video during performances. Your applause is always appreciated, but please hold until the end of each music section performed.



# ABOUT US



At Michigan State University's College of Music, our world-renowned faculty challenges students to reach their full potential. Our goal is to prepare students for success on the world's concert stages, in leading academic institutions, outstanding ensembles, and innovative music education programs. We also equip students for thriving portfolio careers in the ever-evolving music industry.

While maintaining rigorous standards, we prioritize the human element of music learning. Our philosophy centers on the power of community, health and wellbeing, career development, and a strong commitment to diversity, equity, inclusion, and belonging. We cultivate an environment where students can explore new realms of artistic expression and develop unique creative styles. Our community includes more than 55 faculty, 600 music majors and engages more than 10,000 non-music majors and community members through diverse courses, outreach programs, ensembles and two community music schools. Students enjoy focused musical study alongside the rich opportunities of a large university, balancing personalized attention with the benefits of a vibrant, interdisciplinary atmosphere.

Our exceptional faculty and staff, state-of-the-art facilities for rehearsal, practice, and performance spaces, our innovative programs and holistic approach to music education combine to make MSU a premier training ground for performers, composers, music educators, and scholars. Our diverse, engaging, supportive, and career-focused experiences pave the way for rewarding futures in music.



## EXPLORE MUSIC AT MSU

Stay updated. Sign up to receive occasional emails about upcoming events and concerts, including this season brochure and special offers: [music.msu.edu/events](https://music.msu.edu/events). Connect with us. Follow all things music at MSU and share with your friends. Join thousands of followers who connect with us through Facebook and Instagram @musicmsu. Browse selections from our past concerts on YouTube.

[MUSIC.MSU.EDU](https://music.msu.edu)  
517-353-5340



College of Music  
MICHIGAN STATE UNIVERSITY





College of Music  
MICHIGAN STATE UNIVERSITY

333 W. Circle Drive  
Music Building, Room 102  
East Lansing, MI 48824

NON-PROFIT ORG.  
U.S. POSTAGE  
**PAID**  
Lansing, MI  
Permit #249